

# MAGAIN



## 8 Tokay Crescent MORPHETT VALE SA

3  1  1 

Please contact Mike Dobbin or Zoe Usher for inspection details.

Nestled in this popular pocket, sits this beautifully presented home, perfect for those entering the market or scaling down. Situated on a corner block, it offers the possibility of parking access for your boat or caravan.

The functional floor plan consists of three bedrooms, all with generous built in robes, large L shaped formal lounge with feature bay window, formal dine, beautifully renovated kitchen with stainless steel appliances, updated bathroom with separate toilet and a good size laundry.

Outside features a large undercover entertaining area with

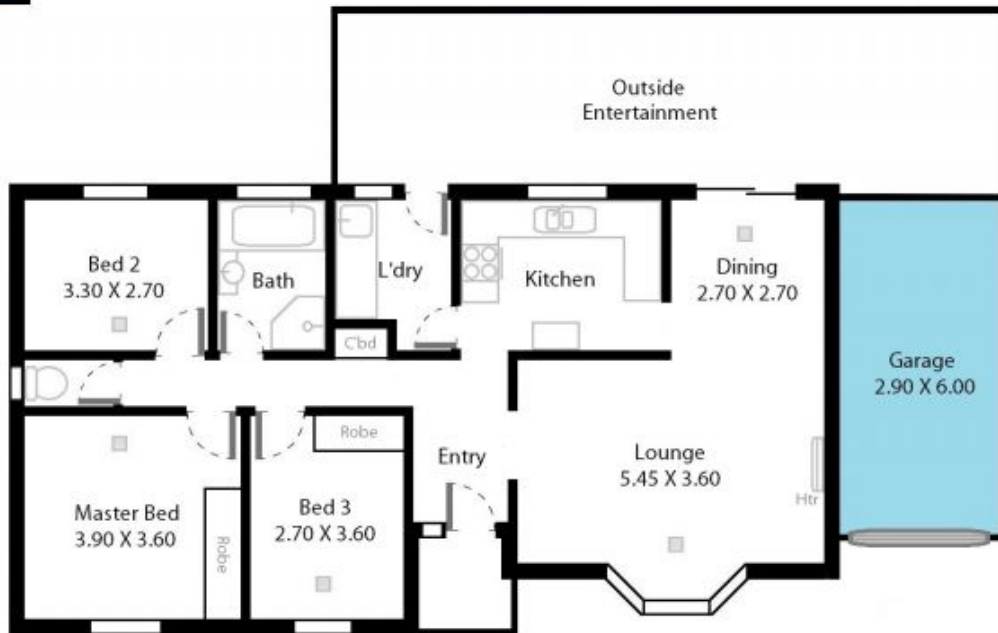
[For full version visit the website](https://www.magain.com.au/property/8-tokay-crescent-morphett-vale-sa/8437261)

**Type** : House  
**Building Size** : 13 sqm  
**Land Size** : 650 sqm  
**View** : <https://www.magain.com.au/property/8-tokay-crescent-morphett-vale-sa/8437261>



**Zoe Ball**  
08 8381 6000

8 Tokay Crescent Morphett Vale, South Australia.



**Picture intended as a reference only.** Any specific measurements required should be obtained by an independent surveyor.