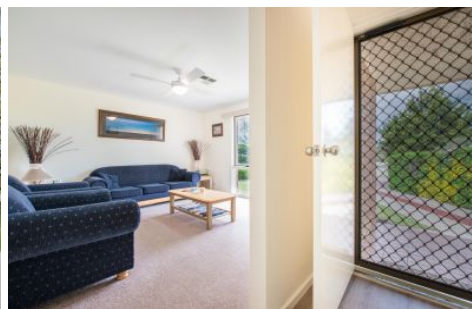


MAGAIN



10 Treharne Court NOARLUNGA DOWNS SA

3 1 4

Call Scott McPharlin for viewing times.

Packed full of features and with a big secure backyard, this beautifully presented home set on 751sqm at the end of a quiet cul-de-sac is a fantastic choice for those looking for an outstanding first home or a solid investment.

Upon entry, you're welcomed into the front formal lounge room complete with ceiling fan and large windows to let in plenty of light. The kitchen and dining area is sure to impress. Easy care vinyl plank floors make the kitchen feel light and bright with the modern splashback, gas appliances, and plenty of bench and storage space making this a space you will love.

Type : House
Building Size : 11 sqm
Land Size : 751 sqm
View : <https://www.magain.com.au/property/10-treharne-court-noarlunga-downs-sa/8437272>



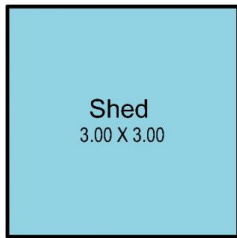
Scott McPharlin
08 8382 0029

[For full version visit the website](https://www.magain.com.au)

<https://www.magain.com.au>
Magain Real Estate

Shop 15, Woodcroft Market Plaza, 217 Pimpala Road W
08 8381 6000

10 Treharne Court Noarlunga Downs, South Australia



Picture intended as a reference only. Any specific measurements required should be obtained by an independent surveyor.