

MAGAIN



7 Grassdale Rise ABERFOYLE PARK SA

3 2 2

Contact Andrew Boswell for further details.

Positioned in a no through street in picturesque Woodlea Estate, this eye catching home with a tree studded outlook has a touch of the 'English cottage and country'.

Welcoming front lounge and dine area with high ceilings, feature working fireplace, ceiling roses and the lovely charm that this home offers. Through into the large family room with ceiling fan, great for the larger furniture and view out onto your entertaining area and calming fish pond. Three bedrooms; large master with big mirrored robes and ceiling fan and ensuite bathroom. Also door access to the entertaining area. Bedrooms 2 & 3 also have a robes and ceiling fans. Main bathroom, separate toilet and separate laundry. Kitchen with dishwasher, gas top and electric oven and a lovely view from the window watching the family and

Type : House
Building Size : 17 sqm
Land Size : 633 sqm
View : <https://www.magain.com.au/property/7-grassdale-rise-aberfoyle-park-sa/8437295>

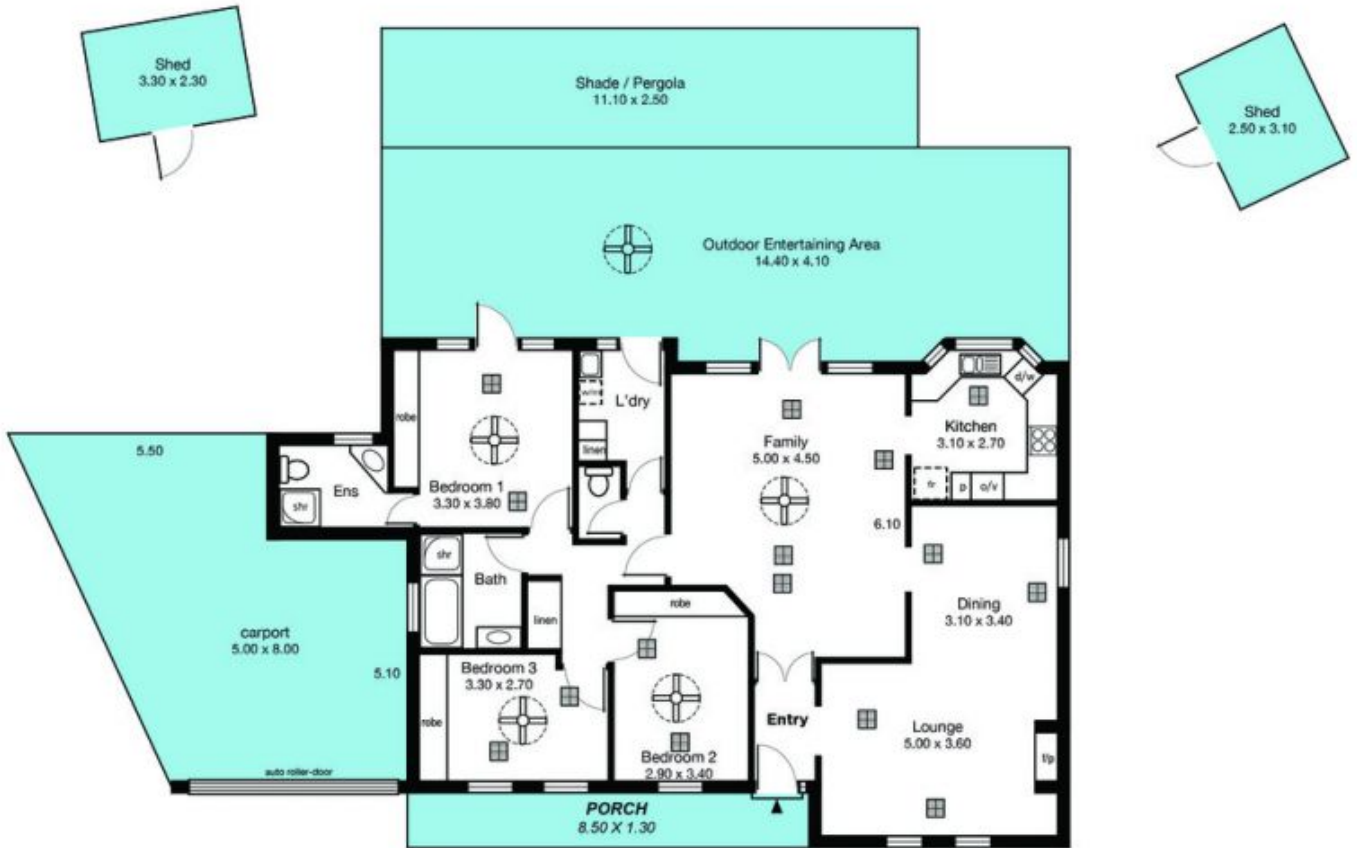


Andrew Boswell
08 8381 6000

[For full version visit the website](https://www.magain.com.au)

<https://www.magain.com.au>
Magain Real Estate

Shop 15, Woodcroft Market Plaza, 217 Pimpala Road W
08 8381 6000



Area	m ²
Living:	119.70
Porch:	11.05
Carport:	68.05
Shade:	27.75
Outdoor:	59.04
Shed:	07.75
Total:	300.93

*This drawing is for illustration purposes only.
All measurements are approximate and details intended
to be relied upon should be independently verified.*