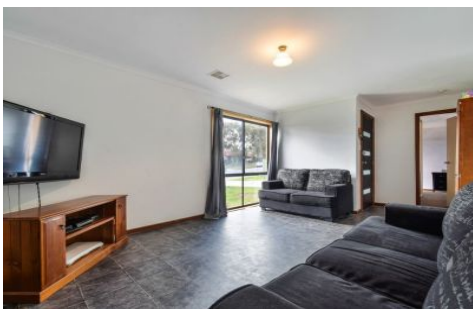


MAGAIN



38 Nicolle Drive MORPHETT VALE SA

3  2  2 

Call Scott for more information.

This delightful home is conveniently located close to schools, shops and transport. Built on a generous 692sqm block, with gated side access to a massive backyard and recently refreshed inside, it is a must see; perfect for the first home buyer, downsizer or investor.

Stepping inside, the functional floorplan includes a family room complete with split system AC and gas heater for year round comfort, which leads through to the tidy kitchen & dining area. A well-appointed kitchen offers a gas oven and cooktop, and good benchtop space and storage. All three bedrooms are large, the master complete with BIR & ensuite. The main bathroom and large separate laundry

Type : House
Land Size : 692 sqm
View : <https://www.magain.com.au/property/38-nicolle-drive-morphett-vale-sa/8437314>



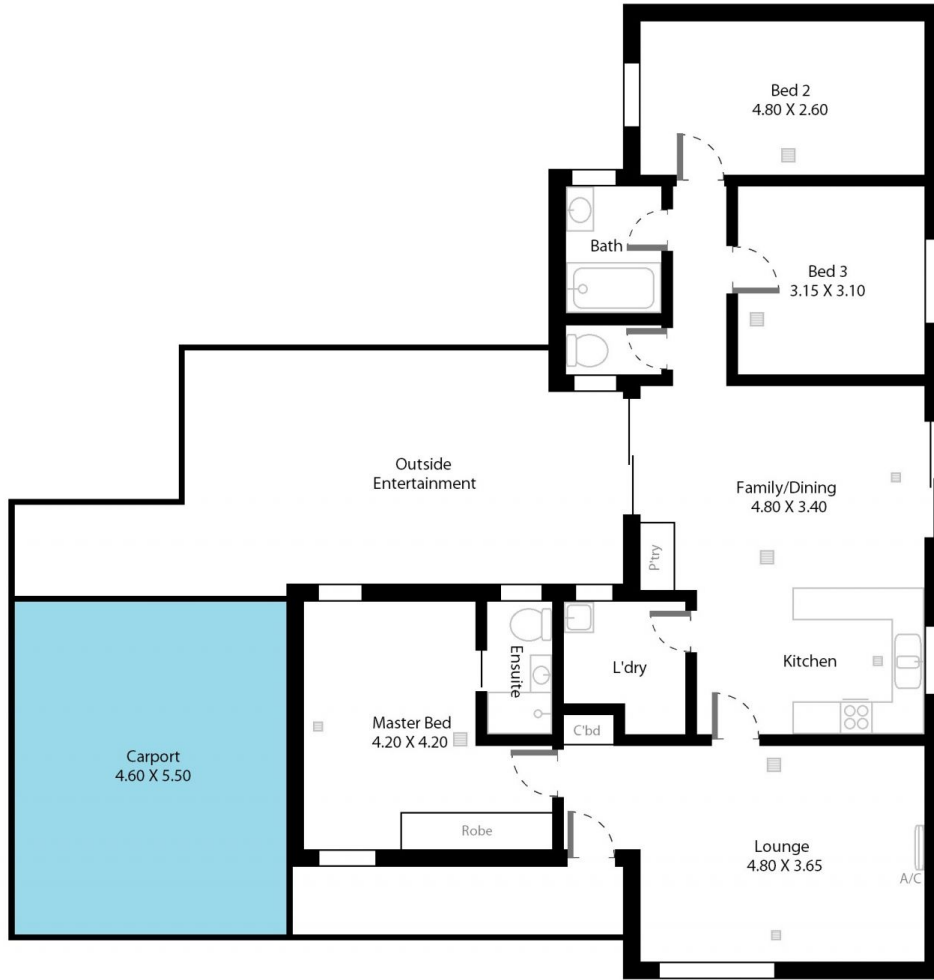
Scott McPharlin
08 8382 0029

[For full version visit the website](https://www.magain.com.au)

<https://www.magain.com.au>
Magain Real Estate

Shop 15, Woodcroft Market Plaza, 217 Pimpala Road W
08 8381 6000

38 Nicolle Drive Morphett Vale, South Australia.



Picture intended as a reference only. Any specific measurements required should be obtained by an independent surveyor.