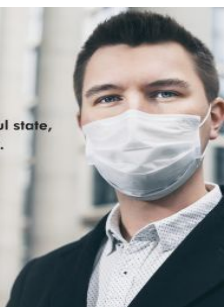


MAGAIN



We want to keep our beautiful state,
and our vendors' homes safe.
So please wear a mask at
our open inspections.

magain
REAL ESTATE



16 Anselm Street CHRISTIE DOWNS SA

3 2 1

Call Sam Raven for inspection details.

Situated on a large 910sqm corner block, this three bedroom home offers a fantastic opportunity to develop three or four allotments on the block (stcc) or renovate the existing home to be a fantastic family home with three bedrooms, two bathrooms and two living areas. Plus there is a big garage with tilt door, concrete floor and power, plus a second powered workshop.

The spacious home offers three bedrooms, master with air conditioning, walk in robe & ensuite, and the other two with ceiling fans and built in robes. There is a large lounge room with gas heater and sliding doors outside, dining room adjacent to the kitchen with gas cooking and dishwasher.

[For full version visit the website](https://www.magain.com.au/property/16-anselm-street-christie-downs-sa/8437349)

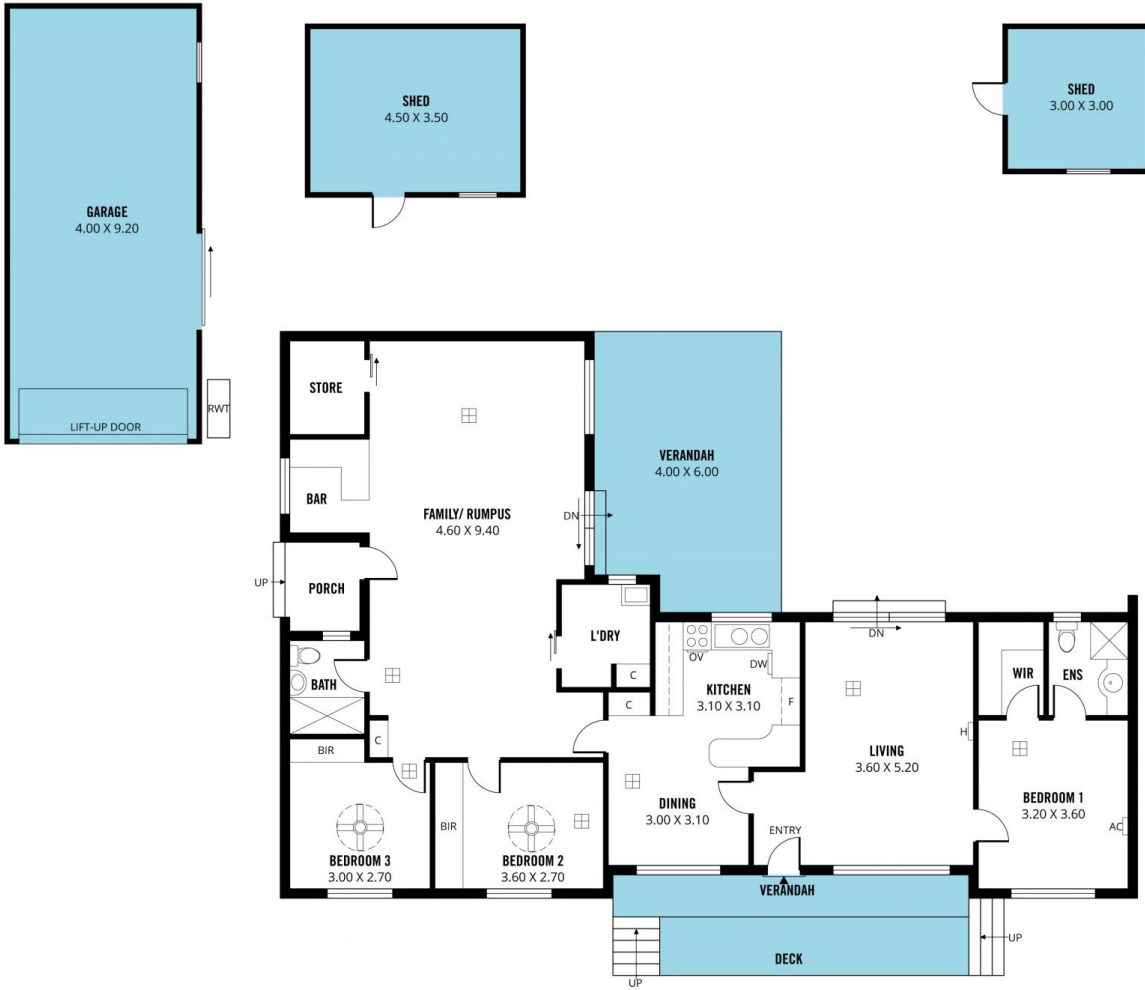
Type : House
Building Size : 17 sqm
Land Size : 910 sqm
View : <https://www.magain.com.au/property/16-anselm-street-christie-downs-sa/8437349>



Sam Raven
08 8381 6000

<https://www.magain.com.au>
Magain Real Estate

Shop 15, Woodcroft Market Plaza, 217 Pimpala Road W
08 8381 6000



Scale in metres. This drawing is for illustration purposes only. All measurements are approximate and details intended to be relied upon should be independently verified.

Produced by The Fotobase Group