

MAGAIN



16 Lennon Drive WOODCROFT SA

3 2 2

Exceptionally positioned in a highly sought after and convenient location, this immaculate brick family home is beautifully maintained and presents with quality finishes throughout. There are 3 generous bedrooms and a versatile living/family area, which emerges out to a landscaped rear garden. This home oozes a sense of warmth and peace, with spacious rooms and large picture windows that allow you to enjoy the natural elements of the outside from within. This comfortable residence on a 512m² block places great emphasis on entertaining in style, with a free flowing open plan design.

The rest of the home is serviced by a modern and stylish family bathroom. A covered entertaining area is a great addition to the fully secured backyard with space for the kids to play and pets to roam. Your undercover car bay

Type : House
Land Size : 512 sqm
View : <https://www.magain.com.au/property/16-lennon-drive-woodcroft-sa/8437354>

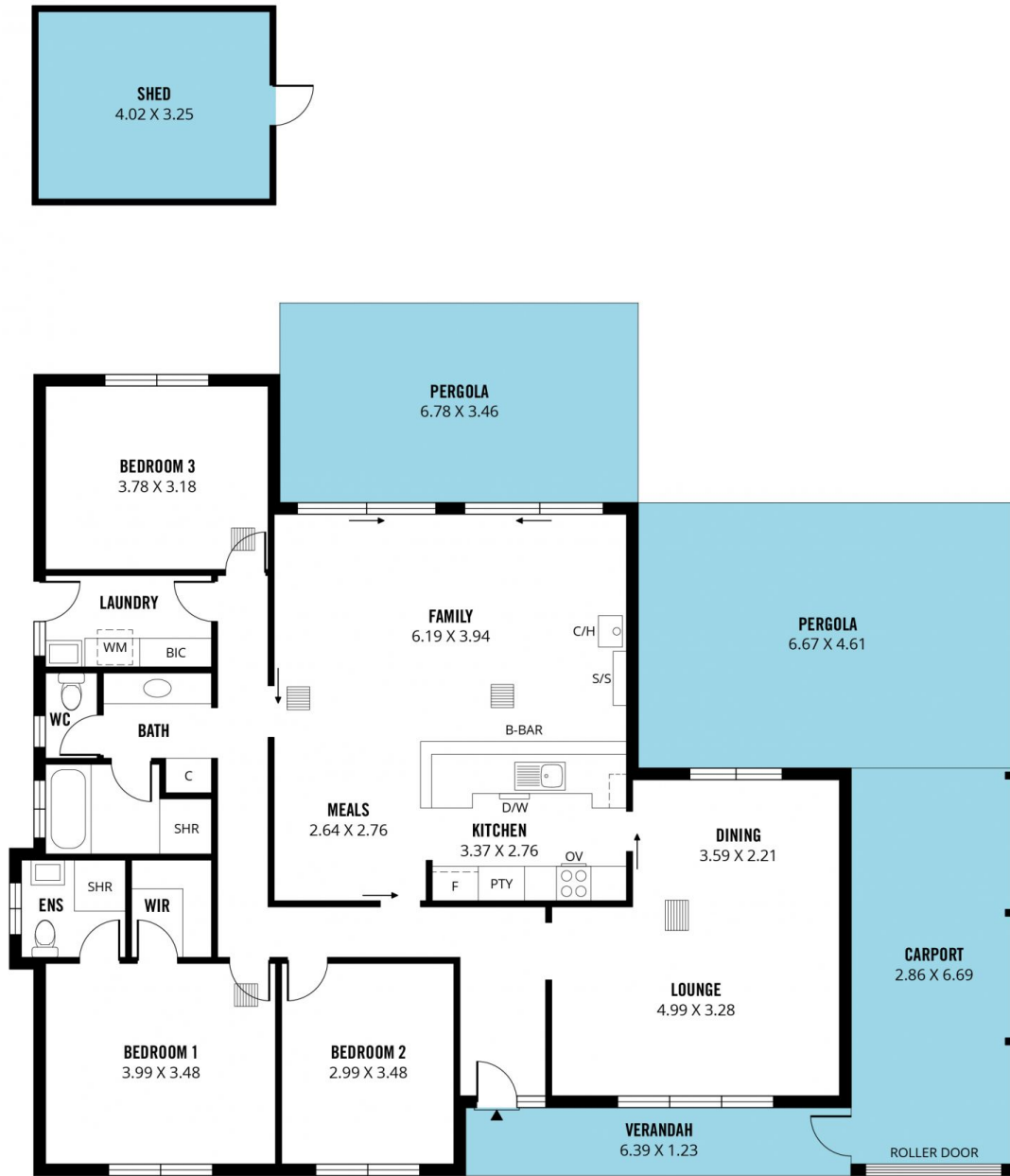


Andrew Robey
0414 879 193

[For full version visit the website](https://www.magain.com.au)

<https://www.magain.com.au>
Magain Real Estate

Shop 15, Woodcroft Market Plaza, 217 Pimpala Road W
08 8381 6000



Scale in metres. This drawing is for illustration purposes only. All measurements are approximate and details intended to be relied upon should be independently verified.

Produced by **The Fotobase Group**