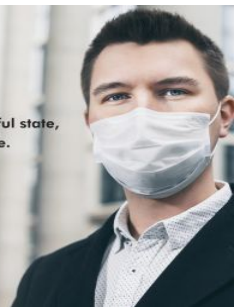


MAGAIN



We want to keep our beautiful state,
and our vendors' homes safe.
So please wear a mask at
our open inspections.

magain
REAL ESTATE



17 Andrew Court ABERFOYLE PARK SA

3 1 1

Please contact Andrew Boswell for further details.

If you're looking to get in at basement level in this very popular and highly sought after suburb and you are not afraid to get your hands dirty with some updating and renovating, then come and take a look. The location is just perfect within walking distance to local schools, walks and parks and the Hub Shopping Centre. Quiet court location with a view over the tree studded horizon from your front porch. Bring an open mind and a vision to create a great first home or investment opportunity.

Some of the features of this property include;

Front lounge area

Dining area or home office/study (with wall air con unit)

Original kitchen with gas cooker

Master bedroom a good size with wall to wall mirror robe

[For full version visit the website](https://www.magain.com.au)

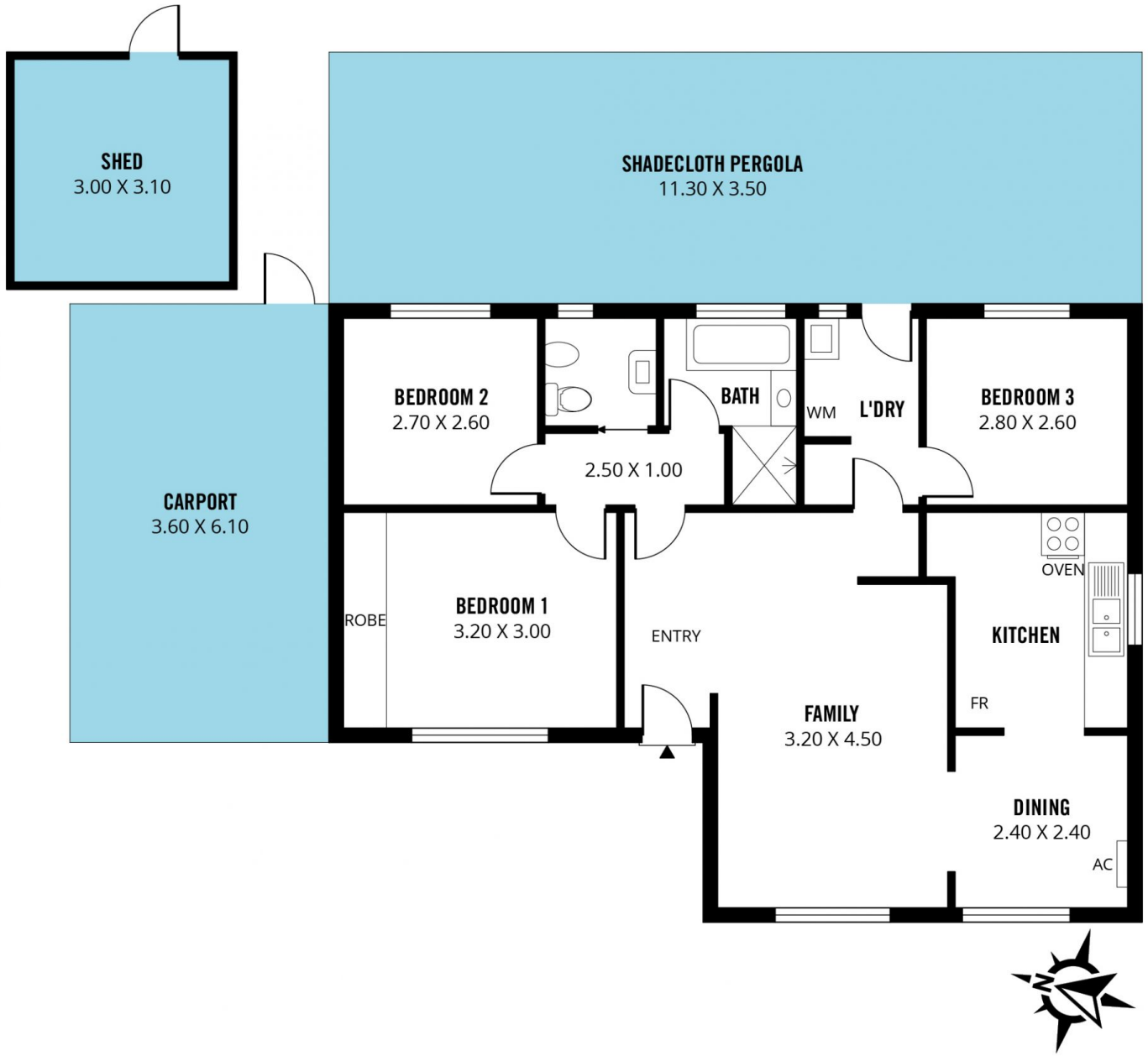
Type : House
Price : \$ 475,000
Building Size : 9 sqm
Land Size : 561 sqm
View : <https://www.magain.com.au/property/17-andrew-court-aberfoyle-park-sa/8437397>



Andrew Boswell
08 8381 6000

<https://www.magain.com.au>
Magain Real Estate

Shop 15, Woodcroft Market Plaza, 217 Pimpala Road W
08 8381 6000



Scale in metres. This drawing is for illustration purposes only. All measurements are approximate and details intended to be relied upon should be independently verified.

Produced by **The Fotobase Group**