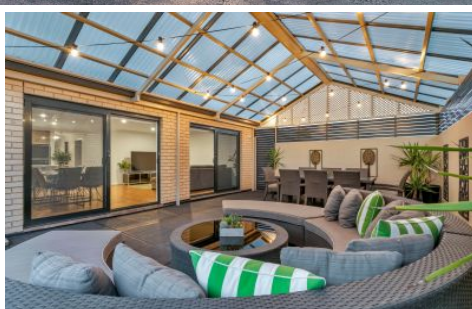


MAGAIN



53 Woodend Road SHEIDOW PARK SA

3 2 1

First available viewing time Sunday 18th October from 2-2.45pm

Quality from start to finish, this courtyard home has so much more on offer than most. Classy, modern touches throughout and all aspects of the home well planned, thought of and implemented from day one. The property takes full advantage of the block with an all weather rear entertaining pergola and side lawned area, just the right size for the kids and pets to play safely.

Just some of the many fantastic inclusions and features this stunning home has on offer are;

Large master bedroom with ensuite bathroom with floor to ceiling tiling, bay window and walk-in robe

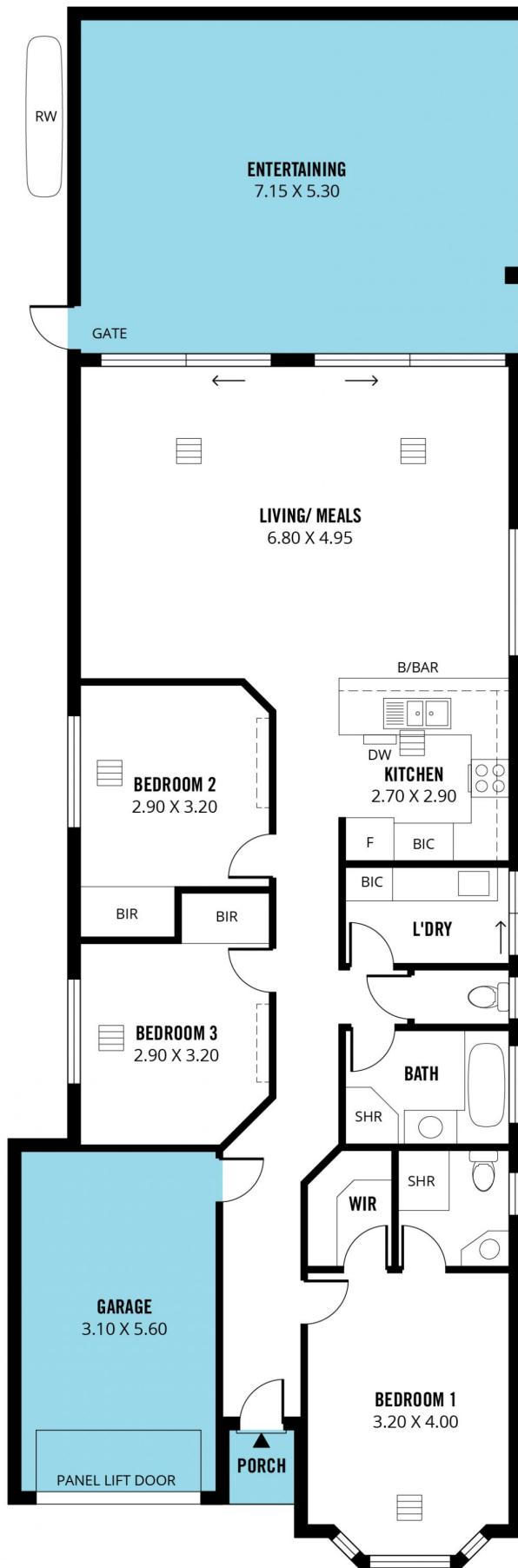
Main bathroom suite with floor to ceiling tiling and with separate toilet and laundry

[For full version visit the website](https://www.magain.com.au/property/53-woodend-road-sheidow-park-sa/8437419)

Type : House
Building Size : 15 sqm
Land Size : 342 sqm
View : <https://www.magain.com.au/property/53-woodend-road-sheidow-park-sa/8437419>



Andrew Boswell
08 8381 6000



Scale in metres. This drawing is for illustration purposes only. All measurements are approximate and details intended to be relied upon should be independently verified. Produced by **The Fotobase Group**