

MAGAIN



30 Sabella Place NOARLUNGA DOWNS SA

3 2 2

This beautifully designed stunning home could be yours. Perfect for entertaining, it features a magnificent chef's kitchen and fabulous undercover outdoor entertaining area.

Surrounded by other modern homes, this low maintenance home has been beautifully and simply landscaped. The neutral décor throughout is complemented by sophisticated fixtures and fittings, along with attractive yet practical glossy floor tiles to the high traffic areas. There's plenty of room to work from home. Downlights provide a sense of space and plenty of light. The kitchen is divine, and the envy of any home chef with loads of bench space, gas cooktop and a dishwasher.

The three bedrooms are all of good size. The master suite

[For full version visit the website](#)

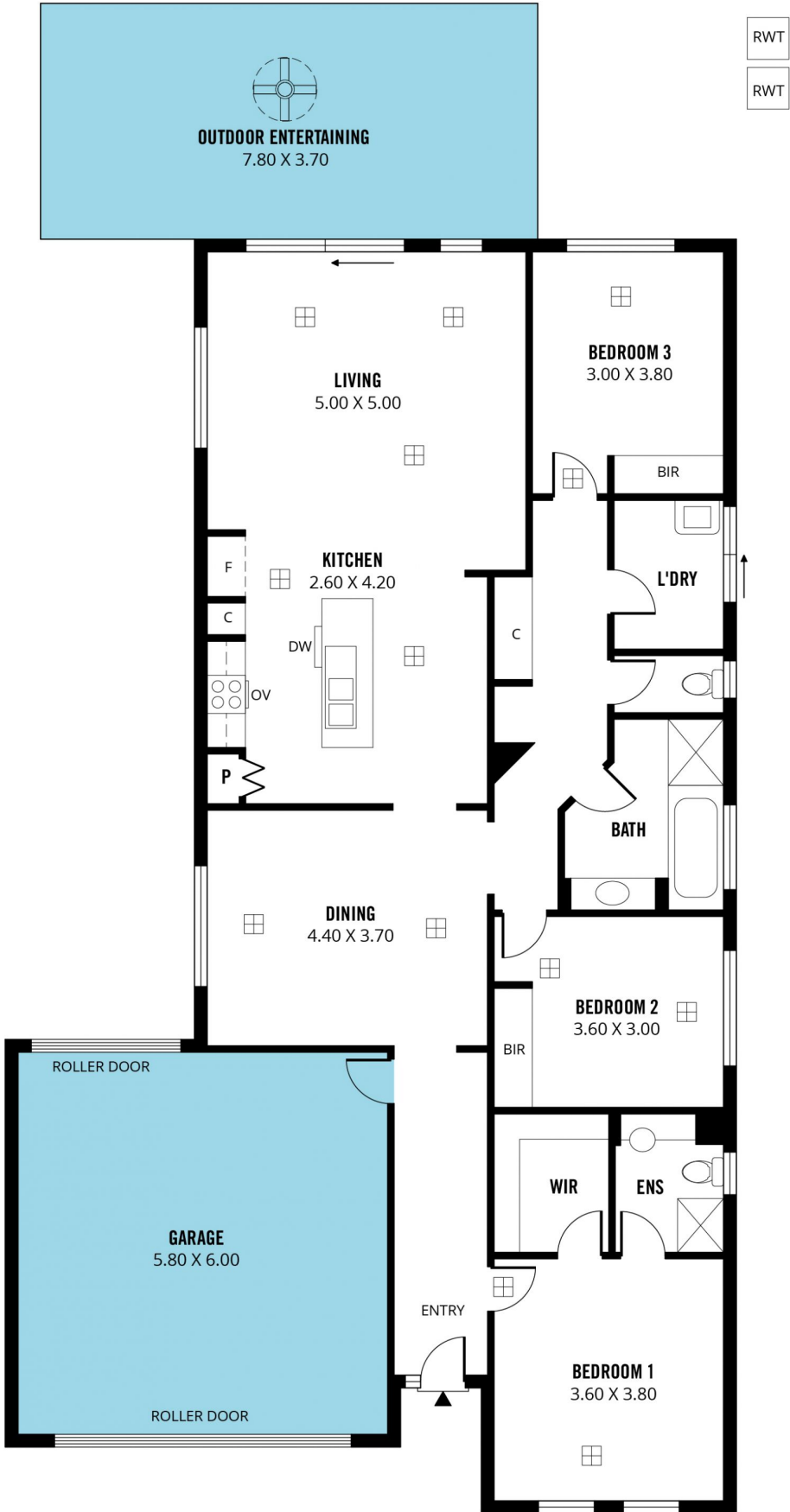
Type : House
Price : \$ 542,000
Building Size : 20 sqm
Land Size : 400 sqm
View : <https://www.magain.com.au/property/30-sabella-place-noarlunga-downs-sa/8437430>



Scott McPharlin
08 8382 6000

<https://www.magain.com.au>
Magain Real Estate

Shop 15, Woodcroft Market Plaza, 217 Pimpala Road W
08 8381 6000



Scale in metres. This drawing is for illustration purposes only. All measurements are approximate and details intended to be relied upon should be independently verified. Produced by **The Fotobase Group**