

MAGAIN



We want to keep our beautiful state,
and our vendors' homes safe.
So please wear a mask at
our open inspections.

magain
REAL ESTATE



1/1 Janet Court FLAGSTAFF HILL SA

2 1 1

Contact Andrew Boswell for further details.
Representing real value for money! Perfectly nestled in a quiet and tranquil pocket of Flagstaff Hill, this is larger than it looks. The ideal downsizer and offering a low maintenance lifestyle. So close to local nature walks, Minkarra Park, playground at Glenhuntly Reserve and local shops and schools. Some of the features of this property are;

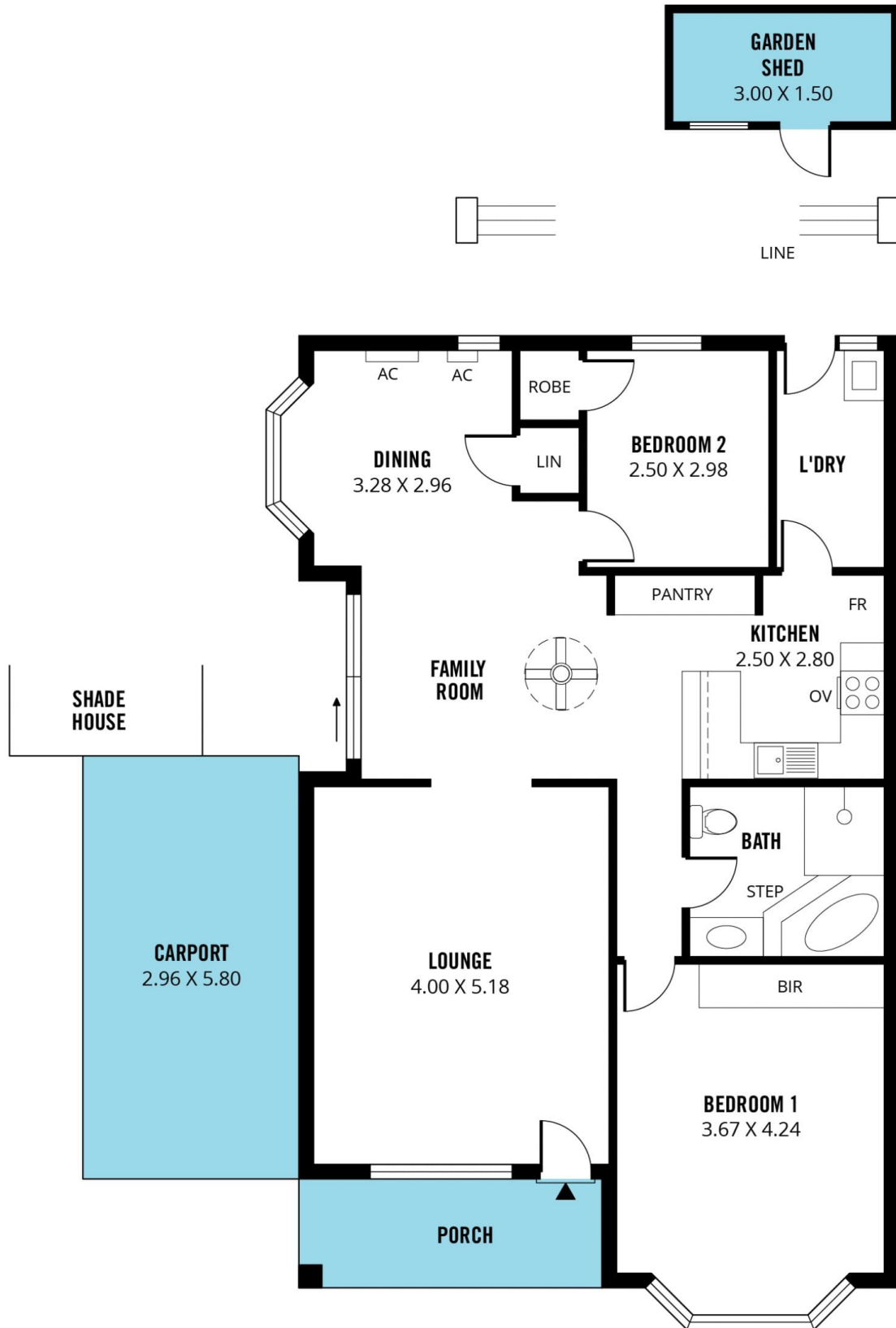
- One of only 2 in a private strata group
- Corner grounds
- Lots of off street parking and single undercover carport
- Spacious formal lounge on entry
- Functional kitchen overlooking dining and family area
- Large master bedroom with mirrored robes
- Bedroom 2 with built in cupboard

[For full version visit the website](https://www.magain.com.au/property/11-janet-court-flagstaff-hill-sa/8437434)

Type : House
Building Size : 11 sqm
Land Size : 448 sqm
View : <https://www.magain.com.au/property/11-janet-court-flagstaff-hill-sa/8437434>



Andrew Boswell
08 8381 6000



Scale in metres. This drawing is for illustration purposes only. All measurements are approximate and details intended to be relied upon should be independently verified. Produced by **The Fotobase Group**