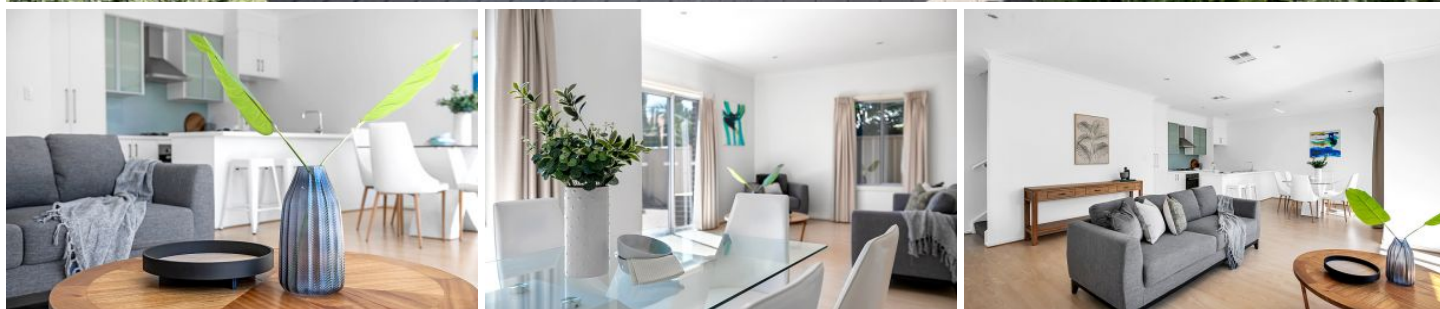


MAGAIN



2/27 Roy Terrace CHRISTIES BEACH SA

3 2 2

This is a very rare opportunity as low maintenance homes with two living areas and a double garage are super hard to find especially when they are in this sensational location only 3 streets between you and the surf, sand and also easy walking distance access to a variety of cafes and restaurants on Beach Road.

The home is at the rear of a group of three and is a very private and quiet location and features a large open plan living area with tile flooring throughout downstairs, including the well appointed kitchen from which you look over a large paved courtyard through your large 4 panel, double opening sliding doors. Also down stairs you have under stair storage, a powder room and internal access to your double garage which is also where your laundry is located.

Type : House

View : <https://www.magain.com.au/property/227-roy-terrace-christies-beach-sa/8437456>



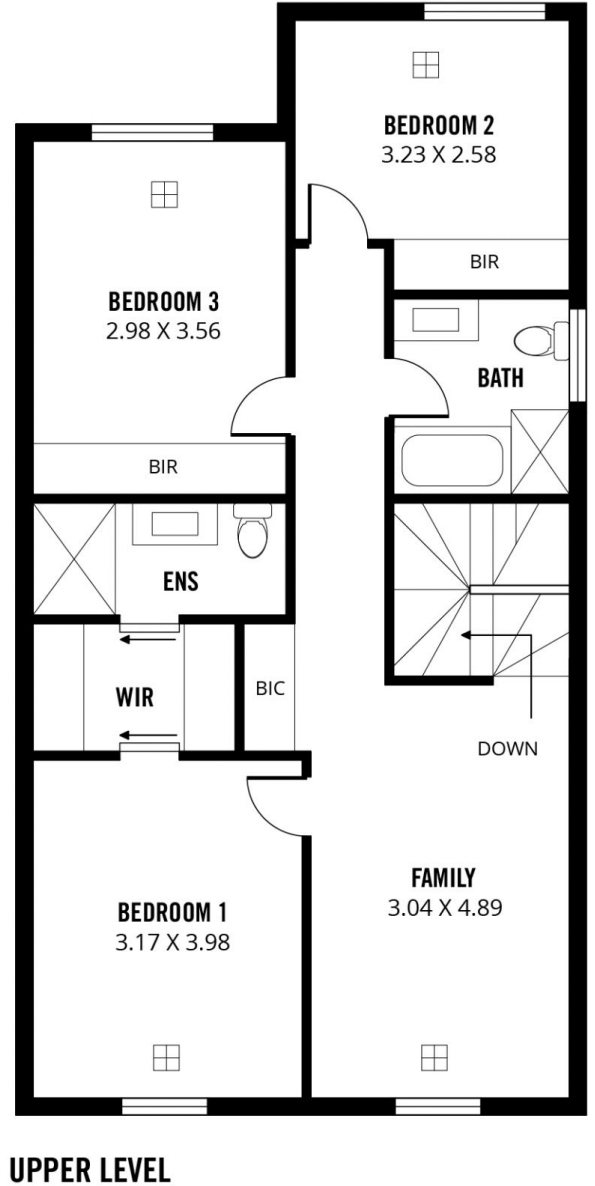
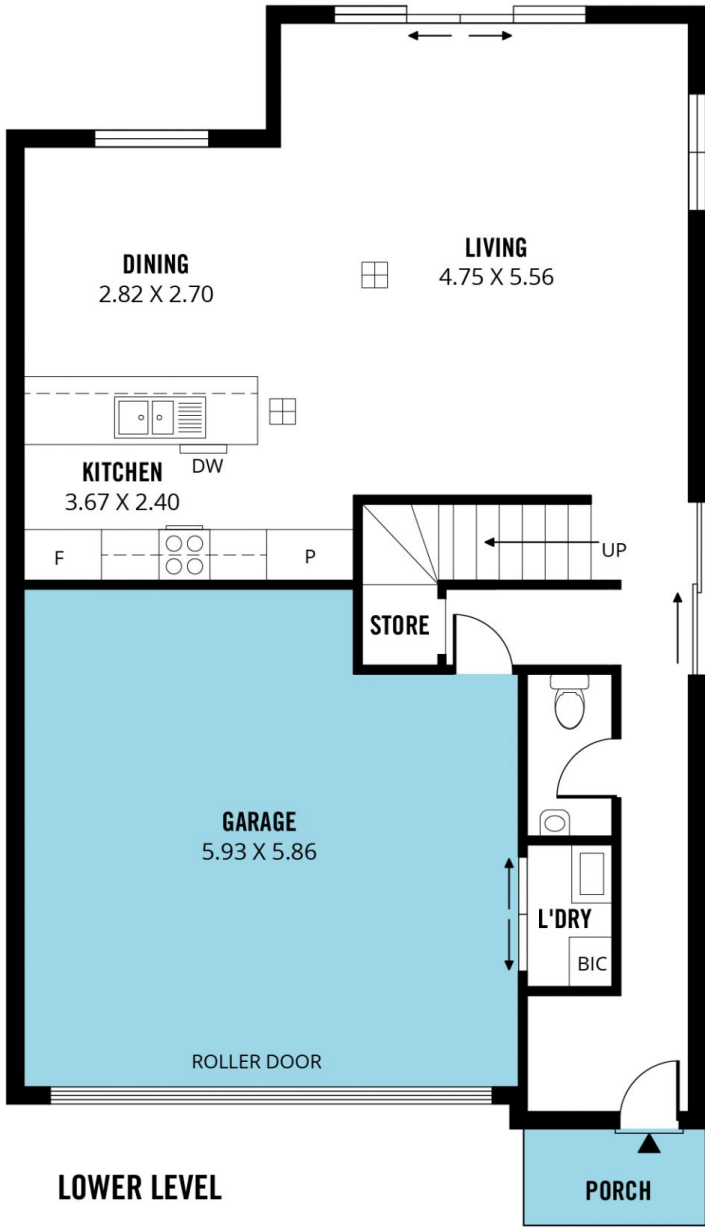
Scott McPharlin
08 8382 0029

[For full version visit the website](#)

<https://www.magain.com.au>
Magain Real Estate

Shop 15, Woodcroft Market Plaza, 217 Pimpala Road W
08 8381 6000

RWT



Scale in metres. This drawing is for illustration purposes only. All measurements are approximate and details intended to be relied upon should be independently verified.

Produced by **The Fotobase Group**