

MAGAIN



26 Estate Drive FLAGSTAFF HILL SA

3 2 2

This lovely, three bedroom home is tastefully decorated with a neutral colour palate and modern fixtures and fittings, ready for you to move straight in and add your own personal touch to create the home you've been looking for.

The open plan living areas at the rear of the home are filled with natural light flowing from the sliding door that leads to an alfresco dining & entertaining area. The adjacent garden bed is prepped and ready for the green thumb of the household to enjoy.

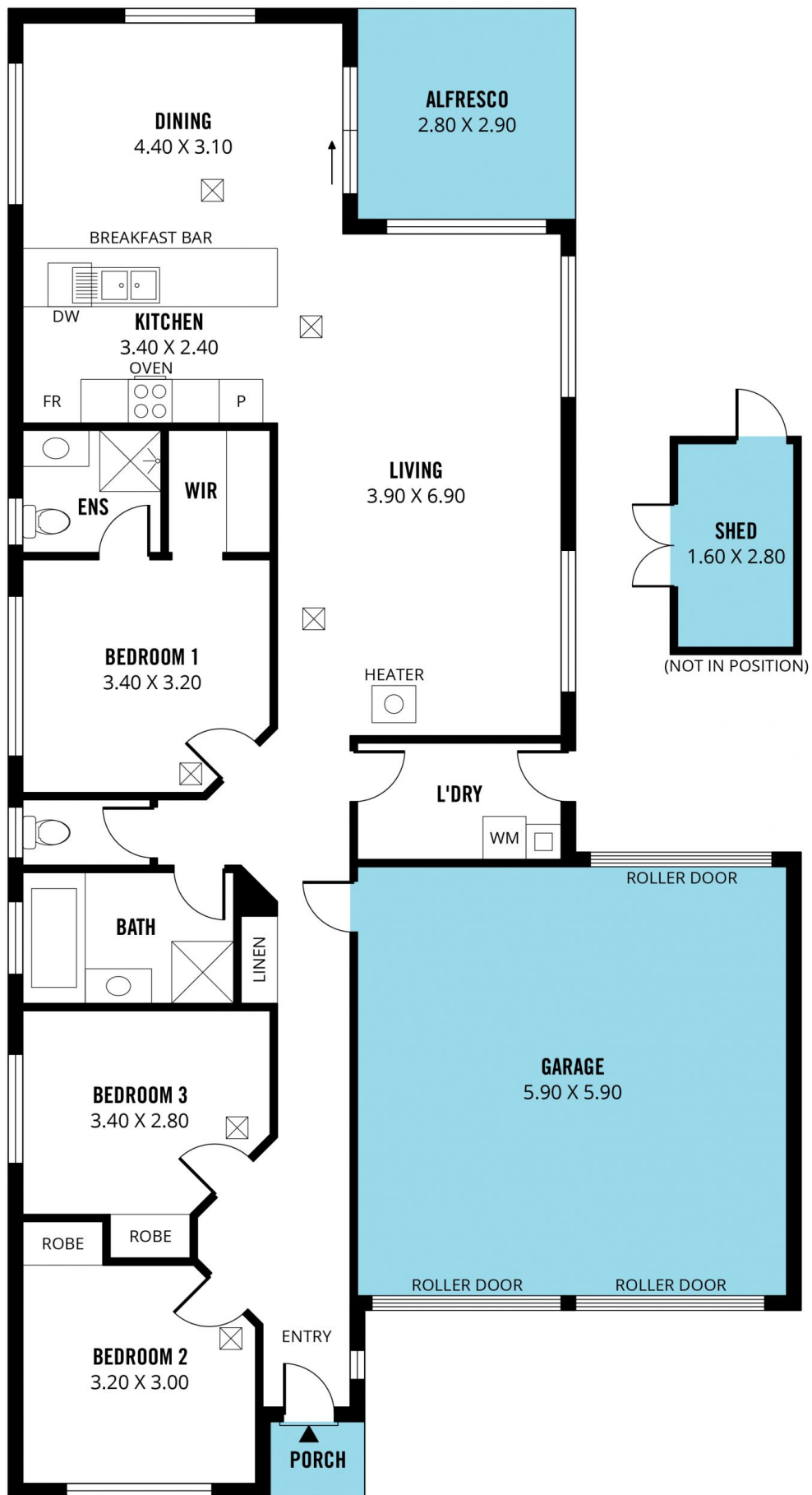
The modern kitchen offers everything you'll need for entertaining your guests & cooking for the family including a double sink, gas cooktop, dishwasher and an abundance of bench and storage space.

[For full version visit the website](https://www.magain.com.au/property/26-estate-drive-flagstaff-hill-sa/8437492)

Type : House
Building Size : 15 sqm
Land Size : 384 sqm
View : <https://www.magain.com.au/property/26-estate-drive-flagstaff-hill-sa/8437492>



Andrew Boswell
08 8381 6000



Scale in metres. This drawing is for illustration purposes only. All measurements are approximate and details intended to be relied upon should be independently verified. Produced by **The Fotobase Group**