

# MAGAIN



39 Charlson Rise HAPPY VALLEY SA

4 🚗 2 🚗 2 🚗

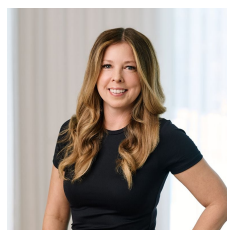
Contact Mike Dobbin or Zoe Ball for inspection times.

Right from first glance you can tell that this home is something special. Nestled on the fringe of Happy Valley, adjacent to Chandlers Hill, this fantastic home has it all. With a feeling of being in the middle of nowhere this sought after location is just minutes away from schools, shops and local attractions like the newly opened Watkins Family Winery and of course, historic Clarendon. Offering stunning views over the valley plus a liveable & functional floorplan mixed with modern style and quality fixtures throughout this marvellous home is sure to impress.

At 252sqm this spacious floor plan can accommodate large & growing families, giving everyone their own space plus

[For full version visit the website](https://www.magain.com.au/property/39-charlson-rise-happy-valley-sa/8437530)

**Type** : House  
**Building Size** : 27 sqm  
**Land Size** : 736 sqm  
**View** : <https://www.magain.com.au/property/39-charlson-rise-happy-valley-sa/8437530>



**Zoe Ball**  
08 8381 6000

<https://www.magain.com.au>  
Magain Real Estate

Shop 15, Woodcroft Market Plaza, 217 Pimpala Road W  
08 8381 6000



Scale in metres. This drawing is for illustration purposes only. All measurements are approximate and details intended to be relied upon should be independently verified.

Produced by **The Fotobase Group**