

MAGAIN



7 Triangle Court NOARLUNGA DOWNS SA

3 2 8

Have you been looking and looking but just can't find a home that matches your requirements? Finding the right one can be very difficult especially if you have been searching for a large property with shedding. But check out all the features of this perfectly maintained family home with one of the best views down south:

- 200sqm of living
- 2 bathrooms + 3rd toilet off the laundry
- Full sized 835 sqm block
- Large kitchen with walk in pantry
- Extremely large bedrooms
- Evap. ducted A/C
- Under cover parking for up to 6 cars
- One of the best views in Adelaide

Type : House
Land Size : 835 sqm
View : <https://www.magain.com.au/property/7-triangle-court-noarlunga-downs-sa/8437545>

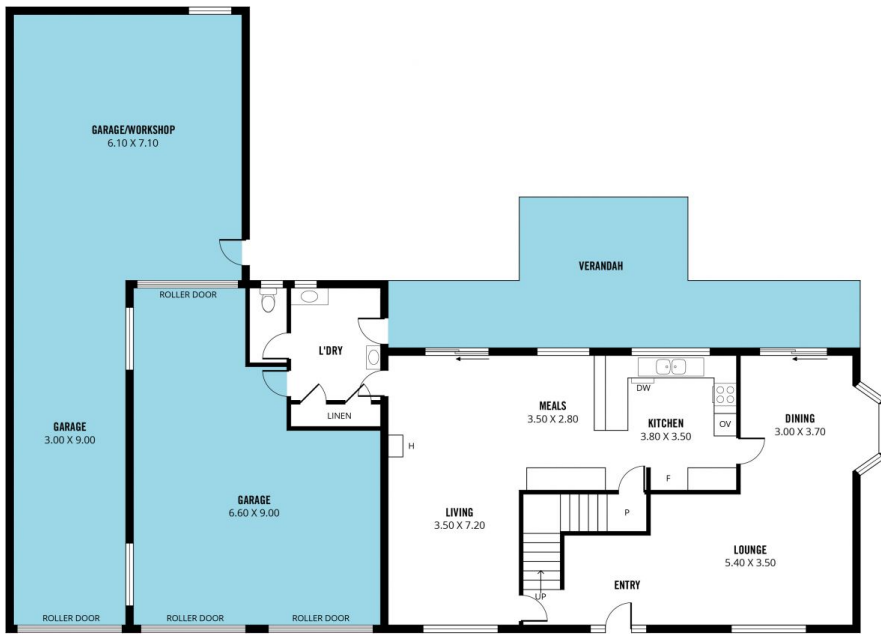


Scott McPharlin
08 8382 0029

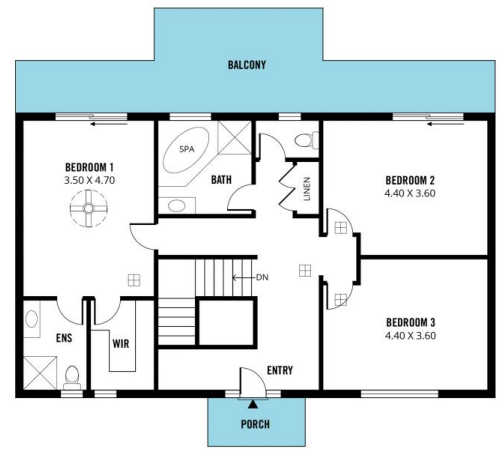
[For full version visit the website](https://www.magain.com.au)

<https://www.magain.com.au>
Magain Real Estate

Shop 15, Woodcroft Market Plaza, 217 Pimpala Road W
08 8381 6000



LOWER LEVEL



STREET LEVEL

Scale in metres. This drawing is for illustration purposes only. All measurements are approximate and details intended to be relied upon should be independently verified.

Produced by The Fotobase Group