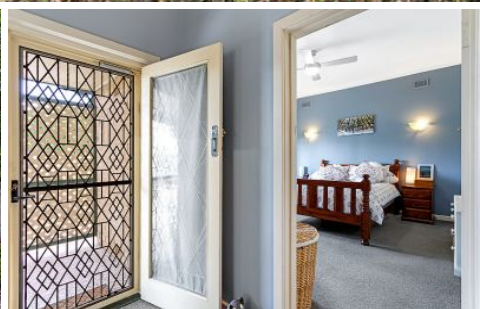


MAGAIN



2 Seaforth Avenue DOVER GARDENS SA

4 🛏 2 🚿 2 🚗

Please contact Mike Dobbin or Zoe Ball for inspection details.

Situated on a sought after block in the heart of Dover gardens, just around the corner from the Seacliff Shopping Centre and of course Westfield Marion just minutes away, plus close by to schools & child care centres, this is certainly a desirable & family friendly pocket. This wonderful block offers great opportunity, not only a fantastic home, but also this huge land size offers re-development potential in the future (stcc).

The solid brick home was originally built in 1960, it has been extended over the years to boast 205sqm of living space. It includes four bedrooms, the master with a lovely

[For full version visit the website](https://www.magain.com.au/property/2-seaforth-avenue-dover-gardens-sa/8437550)

Type : House
Building Size : 22 sqm
Land Size : 1050 sqm
View : <https://www.magain.com.au/property/2-seaforth-avenue-dover-gardens-sa/8437550>



Zoe Ball
08 8381 6000

