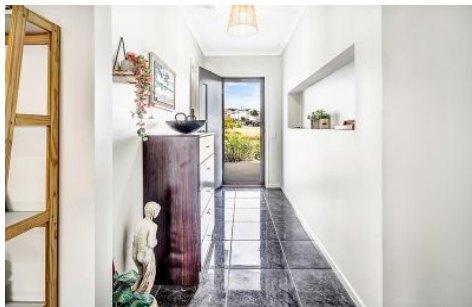


MAGAIN



5 Edgehill Walk NOARLUNGA DOWNS SA

3 2 3

Set in the lovely River Point Estate and opposite a large well-kept reserve is this picture-perfect home located on a wide 12.5m courtyard block of 381 sqm with the added bonus of access to your yard through gates next to the garage. The house has a great floorplan with 2 living areas and 3 good size bedrooms which all have built-in robes with the main having a walk-in robe and an ensuite.

The main living space includes a kitchen, lounge and dining area which has a light and bright feel which flows outside to a large pitched roof pergola. The large kitchen has ample storage, lots of bench space and stainless steel appliances. The second living area is versatile and would make a great lounge, theatre room, playroom or home office as per the current set up.

[For full version visit the website](#)

Type : House
Building Size : 15 sqm
Land Size : 381 sqm
View : <https://www.magain.com.au/property/5-edgehill-walk-noarlunga-downs-sa/8437566>



Scott McPharlin
08 8382 0029