

# MAGAIN



## 20 Appaloosa Way WOODCROFT SA

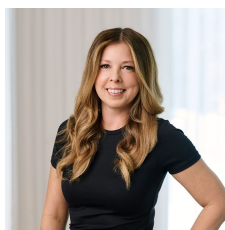
5 2 3

Please contact Mike Dobbin or Zoe Ball for inspection details.

Situated in this blue chip location, adjacent to the Tangari National Park this beautifully presented family home offers a great lifestyle for those looking to move into this popular pocket of Woodcroft. With the tranquillity of the national parks while still being just minutes to local schools, shopping centres and transport.

The spacious floor plan offers five bedrooms plus a parents retreat giving the whole family plenty of space. Three of them have built in robes while the master has an ensuite from the parents retreat. To the front of the home is the huge formal lounge room with bay windows and soft

**Type** : House  
**Building Size** : 24 sqm  
**Land Size** : 944 sqm  
**View** : <https://www.magain.com.au/property/20-appaloosa-way-woodcroft-sa/8437579>



**Zoe Ball**  
08 8381 6000

[For full version visit the website](https://www.magain.com.au)