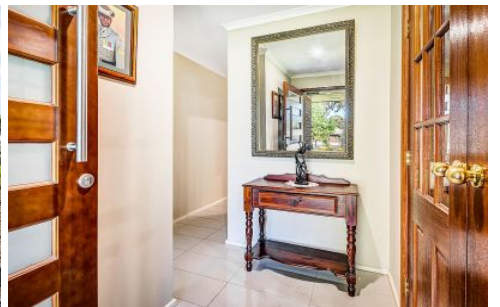


MAGAIN



17 Coorumbena Crescent MORPHETT VALE SA

3 1 4

Its hard to find those homes with room for the toys so don't miss this one that's built for alfresco living. A neat and easy care yard, extensive pergola and light filled fresh interior make this one ready to move in and enjoy.

Inside, a formal entry opens to a light filled lounge with split system and beautiful porcelain tile floors. A functional modernised kitchen awaits around the corner with plenty of storage, dishwasher, a walk in pantry and it overlooks a large family room with plenty of space to entertain.

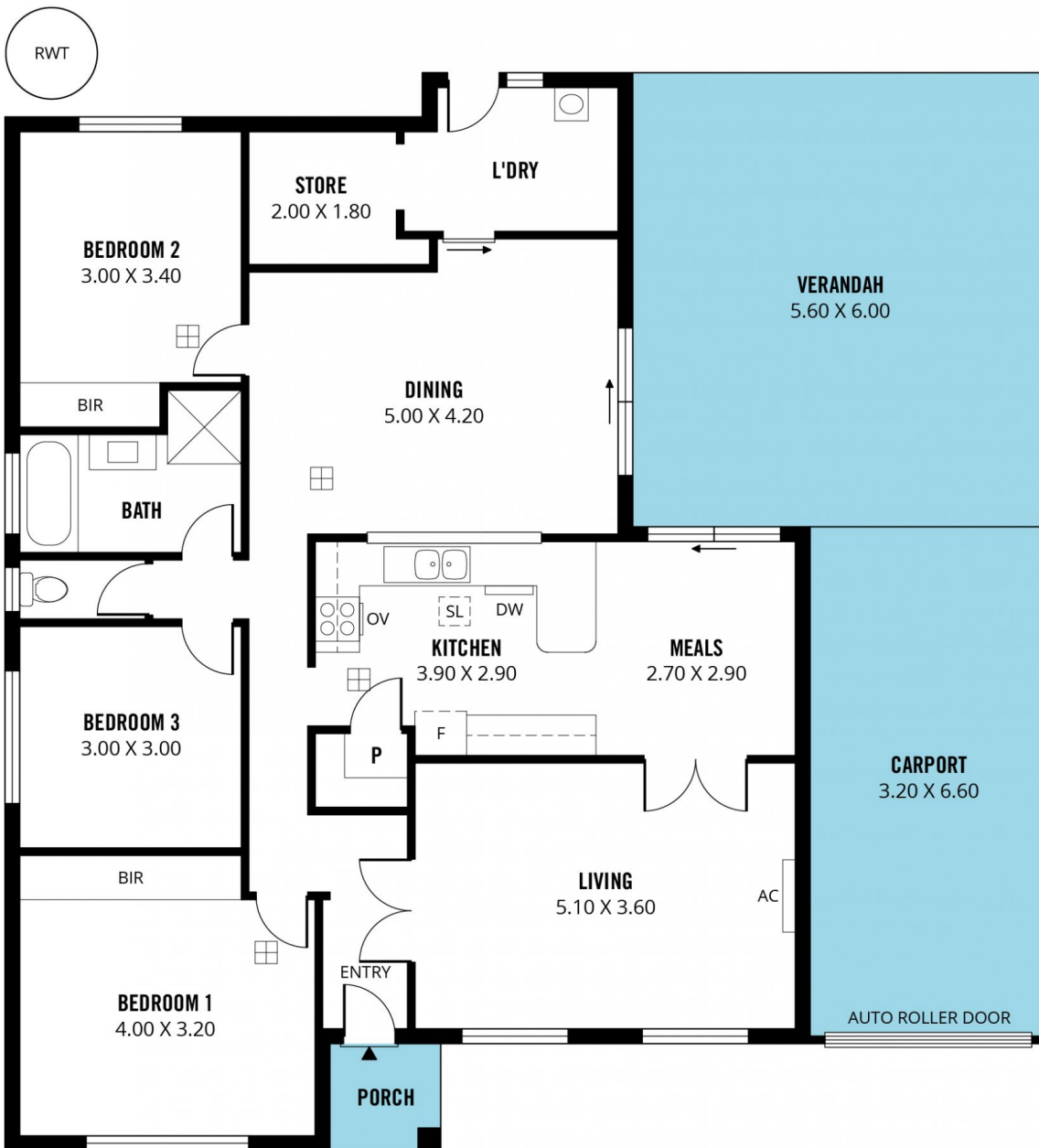
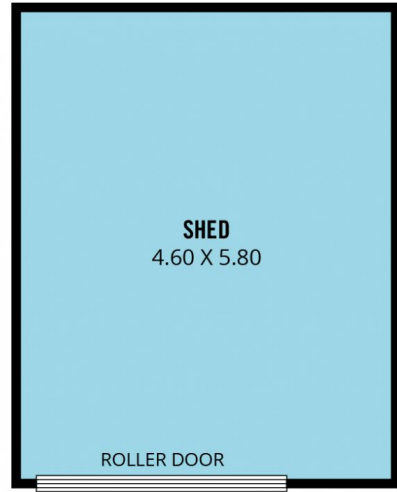
The dining room opens to an enormous pergola - ideal for alfresco meals or invite friends around for a barbecue and the other big feature is the large garage/workshop with roller door. On the other side of the yard you have the huge

[For full version visit the website](https://www.magain.com.au/property/17-coorumbena-crescent-morphett-vale-sa/8437580)

Type : House
Building Size : 16 sqm
Land Size : 680 sqm
View : <https://www.magain.com.au/property/17-coorumbena-crescent-morphett-vale-sa/8437580>



Scott McPharlin
08 8382 0029



Scale in metres. This drawing is for illustration purposes only. All measurements are approximate and details intended to be relied upon should be independently verified.

Produced by **The Fotobase Group**