




MAGAIN



44/129 Smart Road MODBURY SA

2  1  1 

You'll be impressed with this super neat and tidy home in a brilliant location. Handy to everything you need it lies within easy walking distance of Tea Tree Plaza, Modbury Hospital, the bus interchange, and both primary and secondary schools.

The home itself boasts light neutral colours throughout, good sized bedrooms, a spacious updated bathroom, together with a separate toilet and laundry.

There's plenty of storage throughout with an abundance of cupboards in the kitchen, a linen press in the hall and floor to ceiling mirrored robes to the main bedroom. Ceiling fans throughout and evaporative cooling will keep you cool over summer, and a gas heater in the lounge will serve as a

Type : Unit

View : <https://www.magain.com.au/property/44129-smart-road-modbury-sa/8437595>

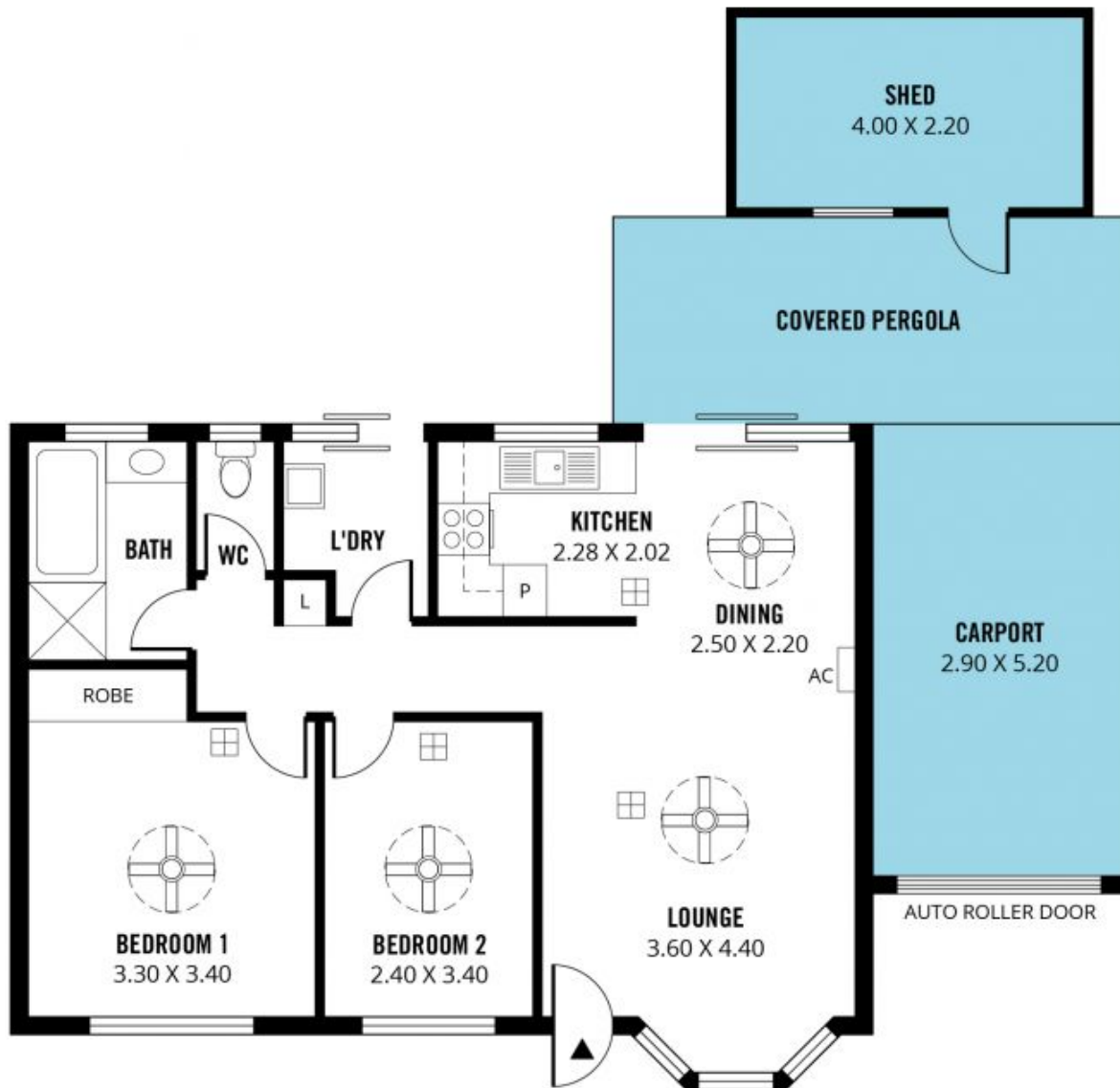


Scott McPharlin
08 8382 0029

[For full version visit the website](https://www.magain.com.au)

<https://www.magain.com.au>
Magain Real Estate

Shop 15, Woodcroft Market Plaza, 217 Pimpala Road W
08 8381 6000



Scale in metres. This drawing is for illustration purposes only. All measurements are approximate and details intended to be relied upon should be independently verified. Produced by **The Fotobase Group**