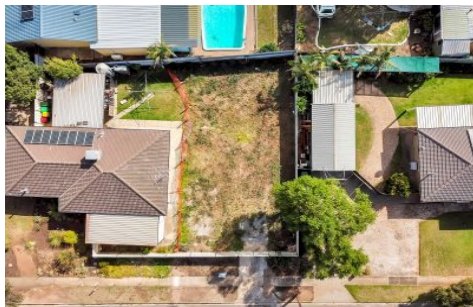


MAGAIN



4 Dominic Crescent MORPHETT VALE SA

Get exactly what you want in a home by building on this flat easy care allotment in the heart of Morphett Vale. Representing amazing value the allotment has a wide 12.5m frontage so you can create your dream home featuring a double garage. With no time limits to build and the flexibility to be able to choose your own builder this is a great place to create your first, next or last home.

This block of land is centrally located with easy access to the Southern Expressway and close to Colonnades Shopping Centre you will find no better spot than this! The options are endless when it comes to what you can achieve. Opportunities at this price are limited so get in quick and call Scott McPharlin to register your interest today.

[For full version visit the website](https://www.magain.com.au/property/4-dominic-crescent-morphett-vale-sa/8437614)

Type : Land
Land Size : 305 sqm
View : <https://www.magain.com.au/property/4-dominic-crescent-morphett-vale-sa/8437614>



Scott McPharlin
08 8382 0029