

MAGAIN



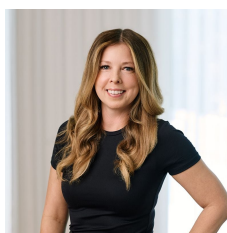
29 Yeltana Avenue HUNTFIELD HEIGHTS SA

Surrounded by other beautifully established quality homes in this great estate, this block provides the perfect space to build your dream home. The block is relatively square with a 21.01m frontage and 36m (approx.) depth, this 752sqm vacant block offers great possibilities.

Copies of soil reports available on request, so you can get straight to choosing your floor plan.

Colonnades, Noarlunga Interchange and TAFE are all a few minutes by car along with the Southern Expressway. You're close to the gorgeous Southern beaches, with Onkaparinga National Park and the famed McLaren Vale wineries just a short drive away.

Type : Land
Land Size : 752 sqm
View : <https://www.magain.com.au/property/29-yeltana-avenue-huntfield-heights-sa/8437630>



Zoe Ball
08 8381 6000

[For full version visit the website](https://www.magain.com.au)

<https://www.magain.com.au>
Magain Real Estate

Shop 15, Woodcroft Market Plaza, 217 Pimpala Road W
08 8381 6000