

MAGAIN



3/30 Richard Avenue Mitchell Park SA

3 1 2

Please contact Andrew Boswell for further details.

Set at the rear of a small group of only three community titled townhouses and a quiet no-thru street, this spacious and very private property is situated very close to local schools, train line, main transport routes to the CBD, Flinders Medical Centre and the coast. Will attract strong interest from young professionals, family homebuyers and investors alike due to it being a popular and well positioned suburb.

Some of the features of this exciting property are;

- Rear of the group offering privacy and peacefulness
- Open plan on the ground floor with light and bright living

[For full version visit the website](https://www.magain.com.au/property/33-0-richard-avenue-mitchell-park-sa/8437675)

Type : Townhouse
Price : \$ 587,500
Building Size : 147 sqm
Land Size : 226 sqm
View : <https://www.magain.com.au/property/33-0-richard-avenue-mitchell-park-sa/8437675>



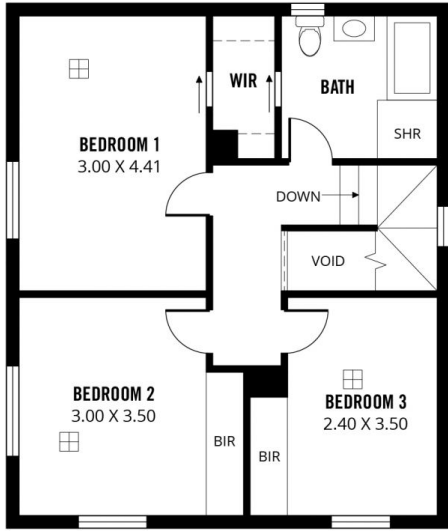
Andrew Boswell
08 8381 6000



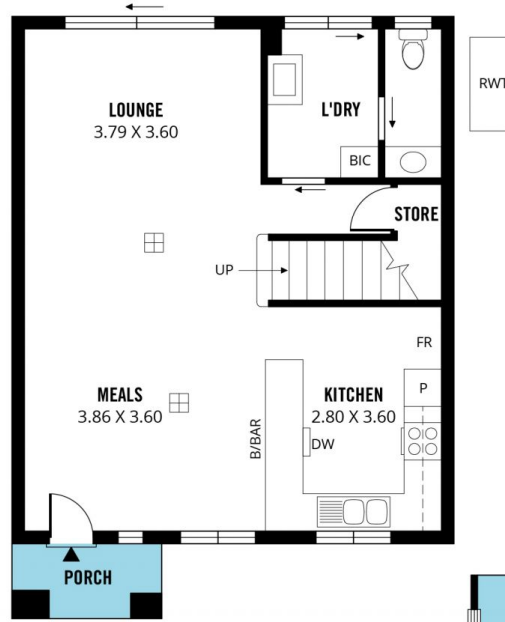
Zoe Ball
08 8381 6000

<https://www.magain.com.au>
Magain Real Estate

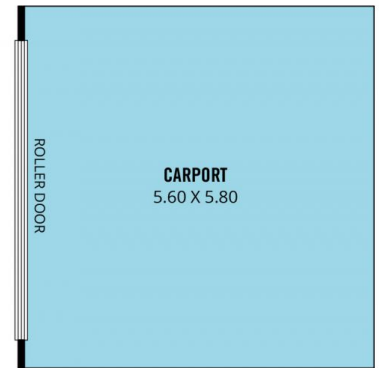
Shop 15, Woodcroft Market Plaza, 217 Pimpala Road W
08 8381 6000



FIRST FLOOR



GROUND FLOOR



Scale in metres. This drawing is for illustration purposes only. All measurements are approximate and details intended to be relied upon should be independently verified.

Produced by **The Fotobase Group**