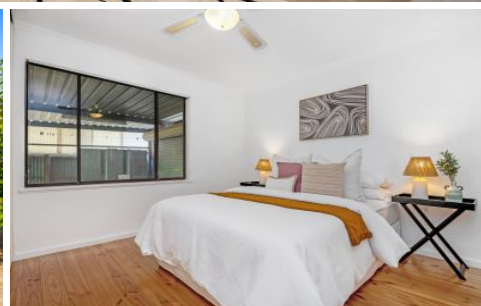


MAGAIN



1 Wattle Court Aberfoyle Park SA

4 1 2

Contact Andrew Boswell for further details.

If you are looking for something still very affordable with the possibility of either a fourth bedroom / office / study, then come and take a look.

The property has been updated in many areas over the years.

Set on a corner block offering a very low maintenance style of living, this is a perfect step on the ladder for this very popular and still growing suburb. So close to local shops at the Hub, Thalassa Park, Happy Valley Reservoir and great local schooling. Just some of the features of this home;

- Roomy lounge and meals area with downlights
- Large benchtop with undershelf space for washing machine and dryer

[For full version visit the website](https://www.magain.com.au/property/1-wattle-court-aberfoyle-park-sa/8437678)

Type : House
Price : \$ 515,000
Building Size : 130 sqm
Land Size : 419 sqm
View : <https://www.magain.com.au/property/1-wattle-court-aberfoyle-park-sa/8437678>



Andrew Boswell
08 8381 6000



Scale in metres. This drawing is for illustration purposes only. All measurements are approximate and details intended to be relied upon should be independently verified.

Produced by **The Fotobase Group**