

MAGAIN



1-3/799 Marion Road Mitchell Park SA

8 3 3

An absolute gem of a find! Not often do opportunities like this come around. For the discerning investor after a group of 3 units all on the one title. In a pivotal position on the doorstep of main transport routes, close by to fantastic schooling, Flinders Medical Centre, Park Holme and Westfield Marion Shopping Centres and of course, the beaches and lifestyle that they offer. All three units currently tenanted out (see below for lease details).

- Torrens Titled and all 3 units on the one title
- Unit group built in 1975
- Off street parking for all units
- Offering a strong annual return of approx \$62,920
- All units updated over the years
- Heating and cooling for each unit

Type : Block of Units
Land Size : 664 sqm
View : <https://www.magain.com.au/property/13799-marion-road-mitchell-park-sa/8437727>



Andrew Boswell
08 8381 6000

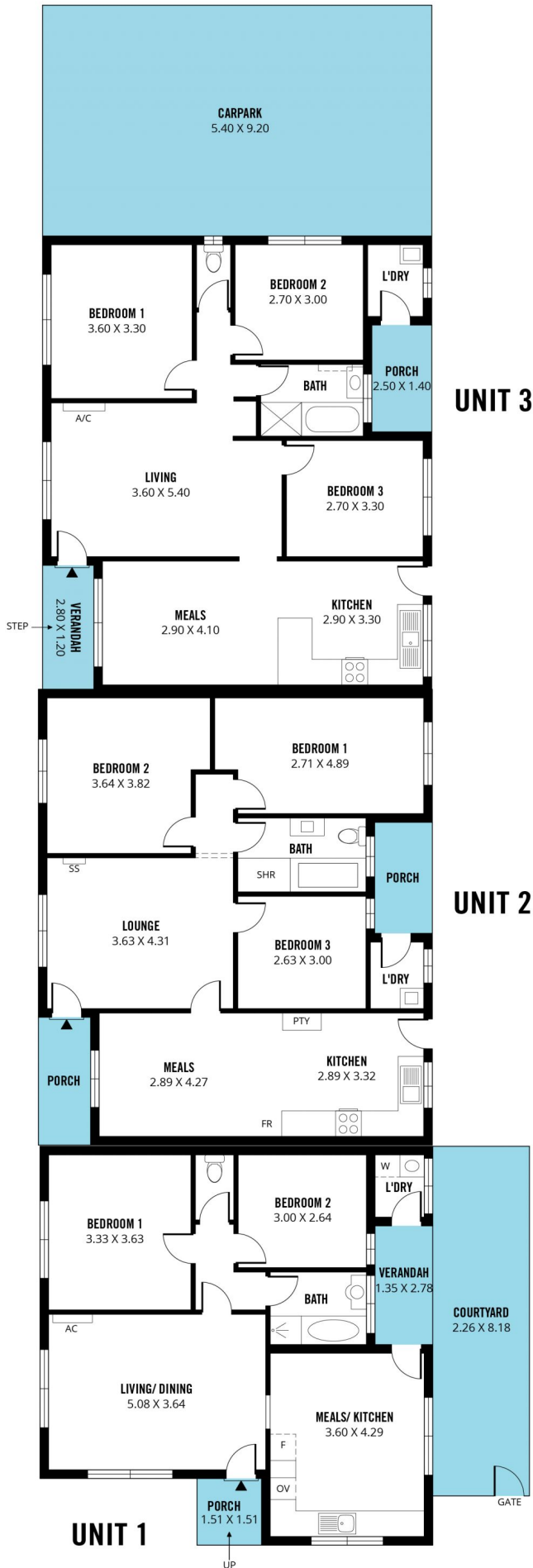


Sam Raven
08 8381 6000

[For full version visit the website](https://www.magain.com.au)

<https://www.magain.com.au>
Magain Real Estate

Shop 15, Woodcroft Market Plaza, 217 Pimpala Road W
08 8381 6000



Scale in metres. This drawing is for illustration purposes only. All measurements are approximate and details intended to be relied upon should be independently verified.

Produced by **The Fotobase Group**

