

# MAGAIN



11/2 Grey Box Avenue Noarlunga Centre SA

2 1 1

Secure, spacious, light, modern and practical. This apartment ticks all the boxes at an affordable price. A great entry level property or investment.

Located on the top floor, it features high ceilings, a large open plan tiled living/dining area, two generously sized bedrooms, both with robes, spacious bathroom with cleverly concealed laundry and a modern kitchen with funky apple-green tiled splashback.

The balcony is of good size, making a great spot to relax with a coffee or to grow your very own herbs. There's a single car space for your car in the secure rear carpark. The building itself is fully secure with key-card entry and intercom.

[For full version visit the website](https://www.magain.com.au/property/11-2-grey-box-avenue-noarlunga-centre-sa/8437728)

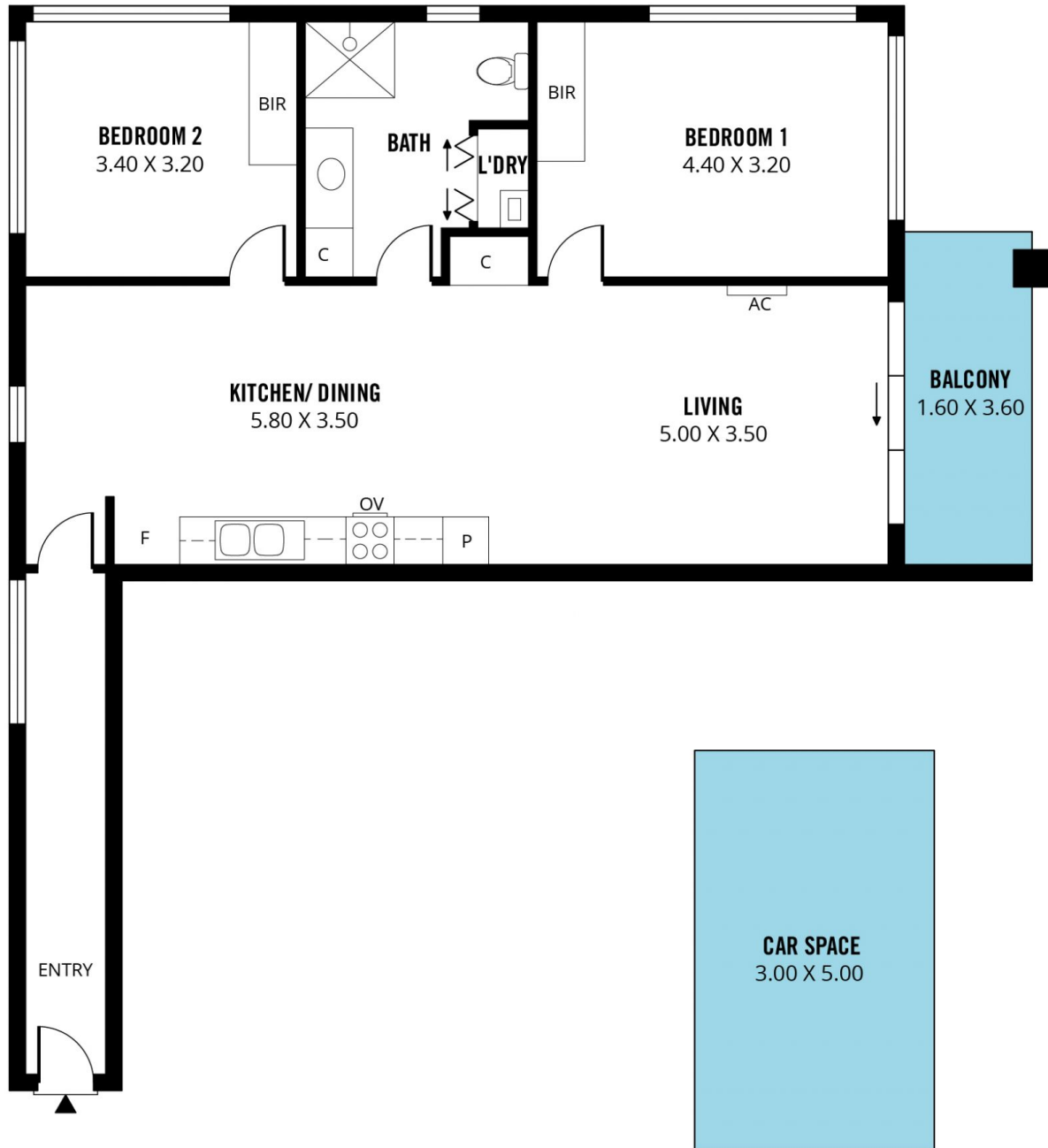
**Type** : Unit  
**Price** : \$ 300,000  
**Building Size** : 79 sqm  
**View** : <https://www.magain.com.au/property/11-2-grey-box-avenue-noarlunga-centre-sa/8437728>



**Scott McPharlin**  
08 8382 0029

<https://www.magain.com.au>  
Magain Real Estate

Shop 15, Woodcroft Market Plaza, 217 Pimpala Road W  
08 8381 6000



Scale in metres. This drawing is for illustration purposes only. All measurements are approximate and details intended to be relied upon should be independently verified. Produced by **The Fotobase Group**