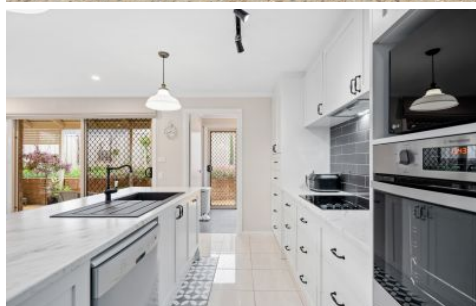


MAGAIN



54 Parri Link Noarlunga Downs SA

4  2  2 

This low maintenance family home is so clean, neat and well looked after.

Elegance is key here with a sophisticated décor throughout including a stunning Hamptons Style kitchen and classic plantation shutters. The floorplan is highly versatile and family friendly with a sumptuous second living area, 3 big bedrooms, two bathrooms and a large study that could easily be utilised as a fourth bedroom.

A large open plan living and dining area at the rear of the home with glossy floor tiles is overlooked by a magnificent, yet practical kitchen. So well thought out, with a huge island bench, along with loads of pot drawers and cabinetry which extends into the laundry providing additional storage

[For full version visit the website](https://www.magain.com.au/property/54-parri-link-noarlunga-downs-sa/8437744)

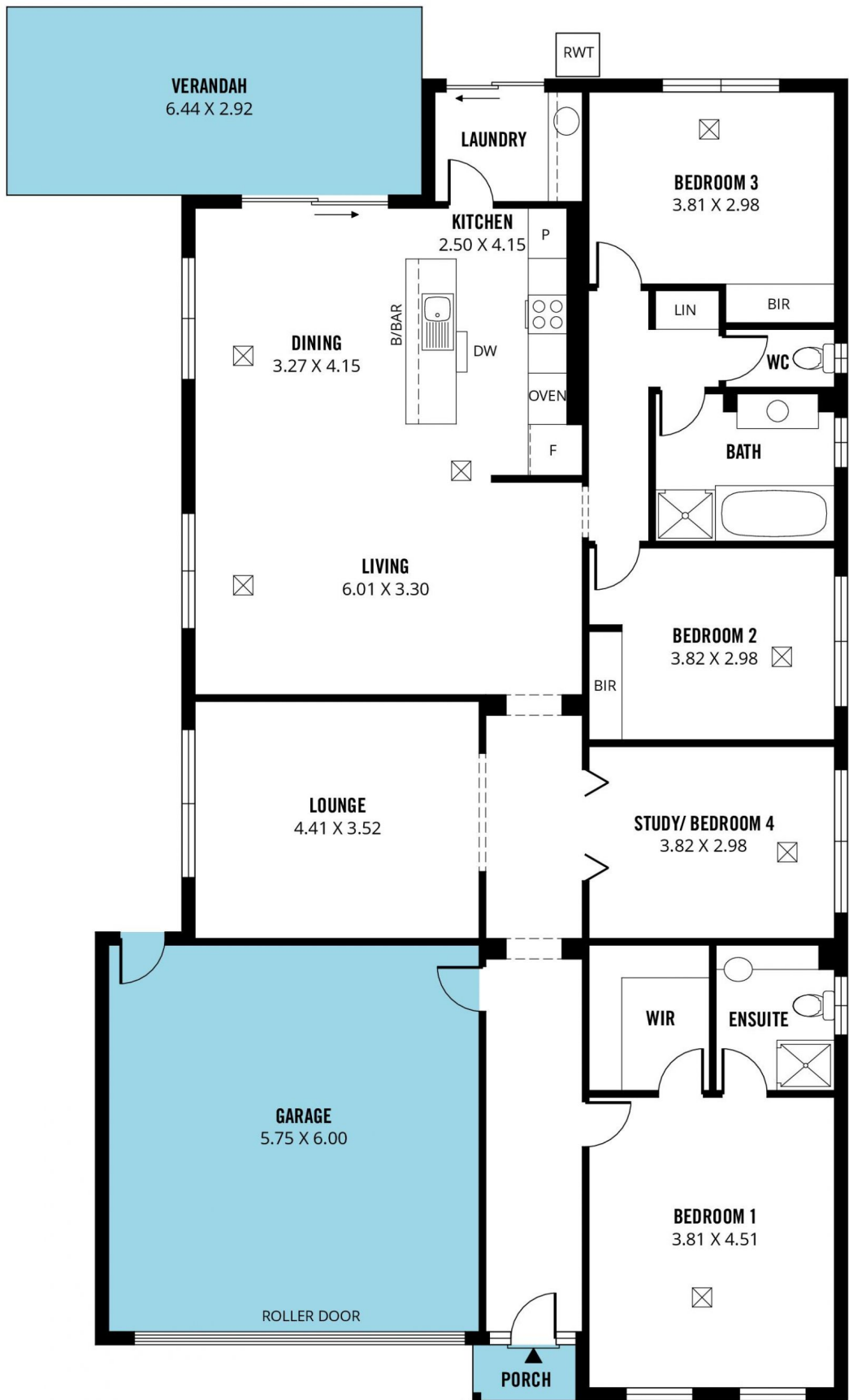
Type : House
Price : \$ 629,380
Building Size : 21 sqm
Land Size : 422 sqm
View : <https://www.magain.com.au/property/54-parri-link-noarlunga-downs-sa/8437744>



Scott McPharlin
08 8382 0029

<https://www.magain.com.au>
Magain Real Estate

Shop 15, Woodcroft Market Plaza, 217 Pimpala Road W
08 8381 6000



Scale in metres. This drawing is for illustration purposes only. All measurements are approximate and details intended to be relied upon should be independently verified. Produced by **The Fotobase Group**