

# MAGAIN



## 9 Tenterton Road Christie Downs SA

3 1 3

This home is in a great spot, directly opposite a park and just around the corner from the local Primary School. Public transport is great, with the train station within walking distance. For kids there's an awesome skate park nearby, including tennis/netball courts, adventure play space, seating, shelters, barbeque facilities and basketball court!! There's also a magnificent walking trail through the Christie Creek reserve. A fabulous outing for the kids and/or the family pooch!

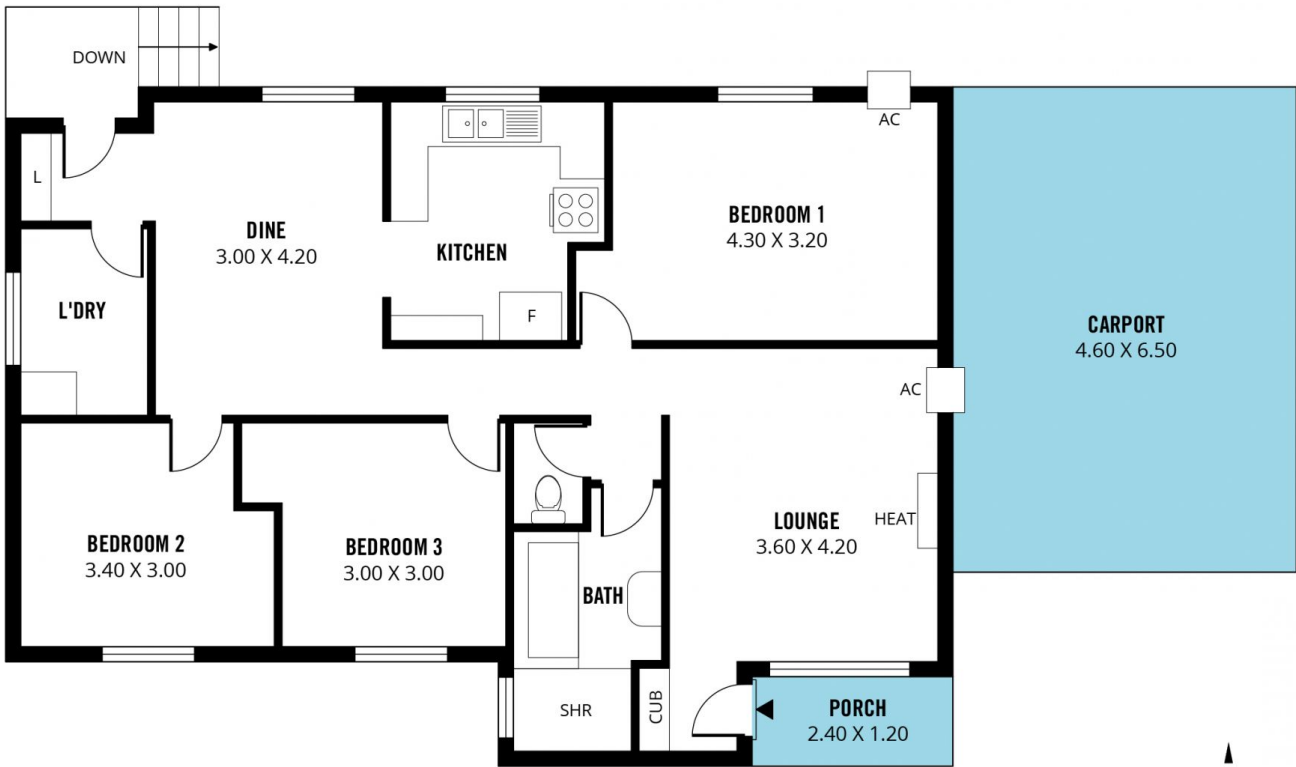
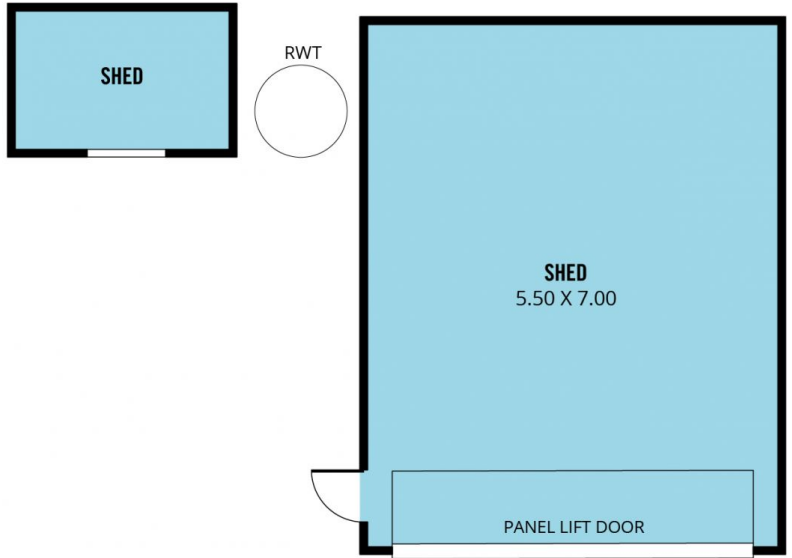
The home itself consists of 3 very generously sized bedrooms, with enough room in each for queen sized beds and the addition of built in robes should your heart desire. The kitchen is quite modern and light. It overlooks a big meals area. With a traditional big grassy back yard there's

[For full version visit the website](https://www.magain.com.au/property/9-tenterton-road-christie-downs-sa/8437758)

**Type** : House  
**Price** : \$ 442,000  
**Land Size** : 716 sqm  
**View** : <https://www.magain.com.au/property/9-tenterton-road-christie-downs-sa/8437758>



**Scott McPharlin**  
08 8382 0029



Scale in metres. This drawing is for illustration purposes only. All measurements are approximate and details intended to be relied upon should be independently verified.

Produced by **The Fotobase Group**