

MAGAIN



24 Watervale Court Darlington SA

3  1  1 

Please contact Andrew Boswell for further details.

The location is a real pleaser with Flinders Medical Centre, Westfield Marion and main transport routes all on your doorstep. Whether after a starter in the market, investment which will prove popular due to its location and features or the perfect downsizer. Sell the lawnmower as spending countless hours in the garden tidying up is over.

Some of the great features of this property are;

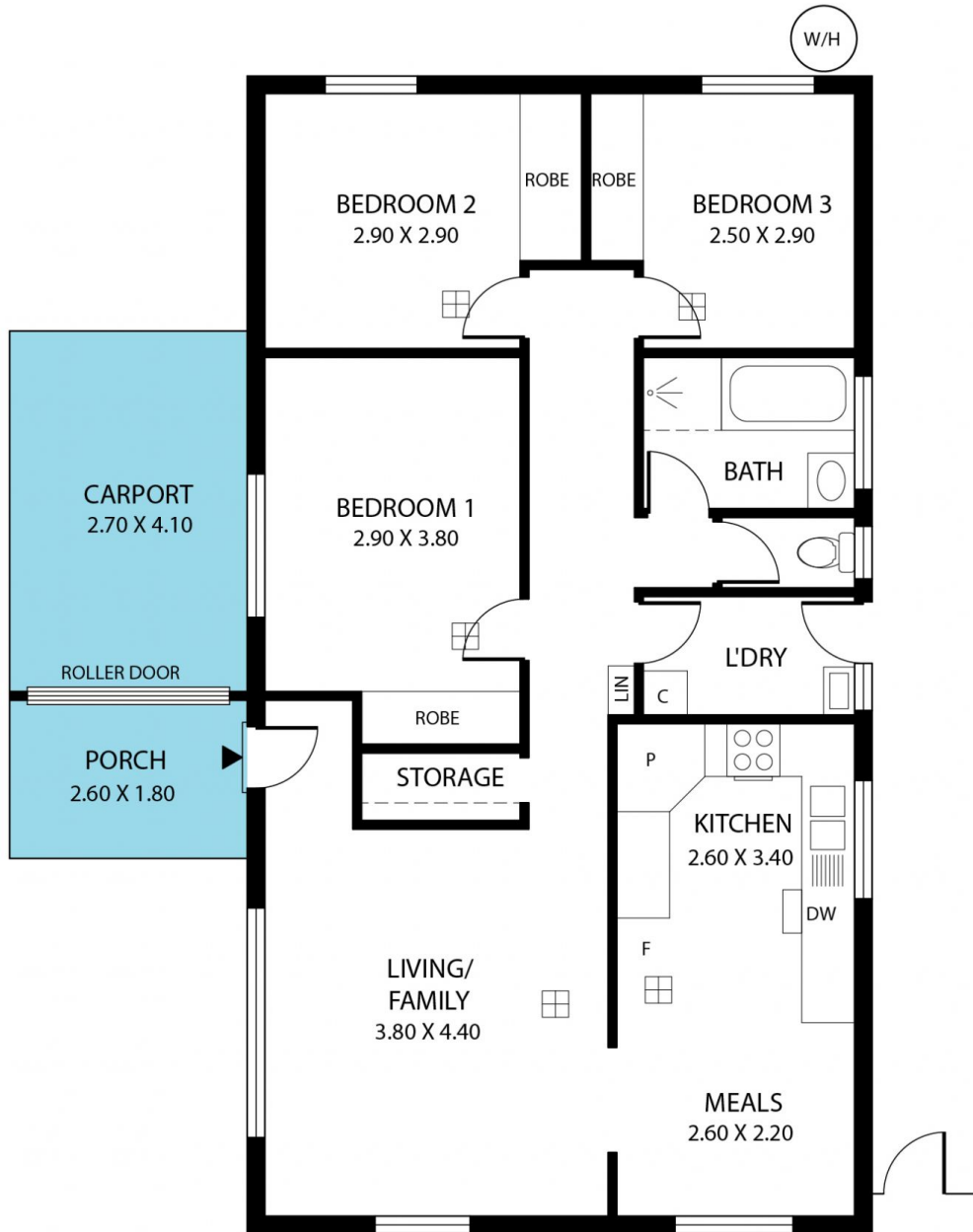
- Torrens Titled
- Lots of off street parking and roller door carport
- Light and bright spacious formal lounge
- Attractive updated kitchen with dishwasher and pantry and meals area
- Double sink and lots of cupboard, drawer and overhead

[For full version visit the website](https://www.magain.com.au/property/24-watervale-court-darlington-sa/8437764)

Type : House
Price : \$ 535,000
Building Size : 105 sqm
Land Size : 276 sqm
View : <https://www.magain.com.au/property/24-watervale-court-darlington-sa/8437764>



Andrew Boswell
08 8381 6000



Scale in metres. This drawing is for illustration purposes only. All measurements are approximate and details intended to be relied upon should be independently verified.

Produced by **The Fotobase Group**