

# MAGAIN



## 42 Thomas Street South Plympton SA

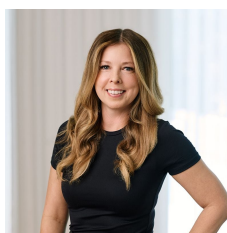
3 1 2

Please contact Mike Dobbin or Zoe Ball for inspection details.

Set on a large 700sqm flat block this original 1955 home offers so much potential. Whether you are looking for a family home on a large block or something with future development potential, this wonderful home is sure to tick both boxes (stcc). In great condition for its age this home is ready to move straight into and offers a great functional floor plan for an updated family home down the track, plus there is the added bonus of the huge external rumpus room. Currently fitted out as a home gym it is a great addition this fantastic home.

**Type** : House  
**Price** : \$ 815,000  
**Building Size** : 130 sqm  
**Land Size** : 700 sqm  
**View** : <https://www.magain.com.au/property/42-thomas-street-south-plympton-sa/8437769>

[For full version visit the website](https://www.magain.com.au)



**Zoe Ball**  
08 8381 6000

<https://www.magain.com.au>  
Magain Real Estate

Shop 15, Woodcroft Market Plaza, 217 Pimpala Road W  
08 8381 6000



Scale in metres. This drawing is for illustration purposes only. All measurements are approximate and details intended to be relied upon should be independently verified.

Produced by **The Fotobase Group**