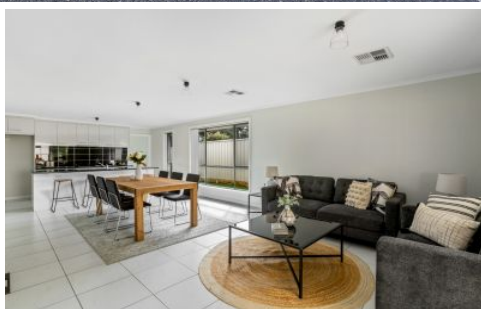


MAGAIN



50A Edinburgh Crescent Old Reynella SA

4 2 2

This home is perfect for those not wanting to compromise on size, space and location for the price. This exceptional house offers flawless interiors, immaculate finishes and a low maintenance, luxurious lifestyle. Well appointed, the modern kitchen features generous bench and storage space, a dishwasher and is steps to the backyard, which is perfect for keeping an eye on the little ones. The functional kitchen and sunny dining area are combined and overlooking the secure and private backyard, perfect for pet lovers.

This house is presented in great condition with nothing else needing to be done, except move in!

? Set in a quiet street, close to schools, shops, sporting facilities and parkland

? Large windows allow for a lot of natural light

[For full version visit the website](https://www.magain.com.au/property/50-a-edinburgh-crescent-old-reynella-sa/8437802)

Type : House
Price : \$ 680,000
Building Size : 161 sqm
Land Size : 434 sqm
View : <https://www.magain.com.au/property/50-a-edinburgh-crescent-old-reynella-sa/8437802>



Andrew Robey
08 8266 2222

<https://www.magain.com.au>
Magain Real Estate

Shop 15, Woodcroft Market Plaza, 217 Pimpala Road W
08 8381 6000



Scale in metres. This drawing is for illustration purposes only. All measurements are approximate and details intended to be relied upon should be independently verified.

Produced by **The Fotobase Group**