

MAGAIN



55 Jimmy Watson Drive Woodcroft SA

3 2 2

Please contact Mike Dobbin or Zoe Ball for inspection details.

Located in one of Woodcroft's most sought after pockets, this custom built home will tick so many boxes for young & growing families, or even downsizers looking for a low maintenance block without compromising on space. From the stunning solid timber floors, to the open plan kitchen & living area to the outside deck and low maintenance courtyard style backyard, inspection is a must!! In terms of location, you won't find much better than this. Within close proximity to quality colleges and schools, Woodcroft Town Centre, public transport, The Vines Golf Club of Reynella, Tangari Regional Park for peaceful walks, this stunning home will not last long

[For full version visit the website](https://www.magain.com.au/property/55-jimmy-watson-drive-woodcroft-sa/8437806)

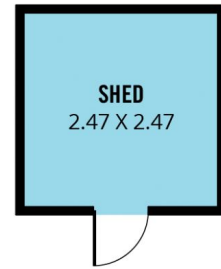
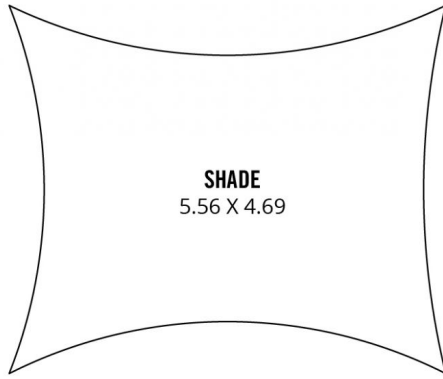
Type : House
Price : \$ 600,000
Building Size : 144 sqm
Land Size : 375 sqm
View : <https://www.magain.com.au/property/55-jimmy-watson-drive-woodcroft-sa/8437806>



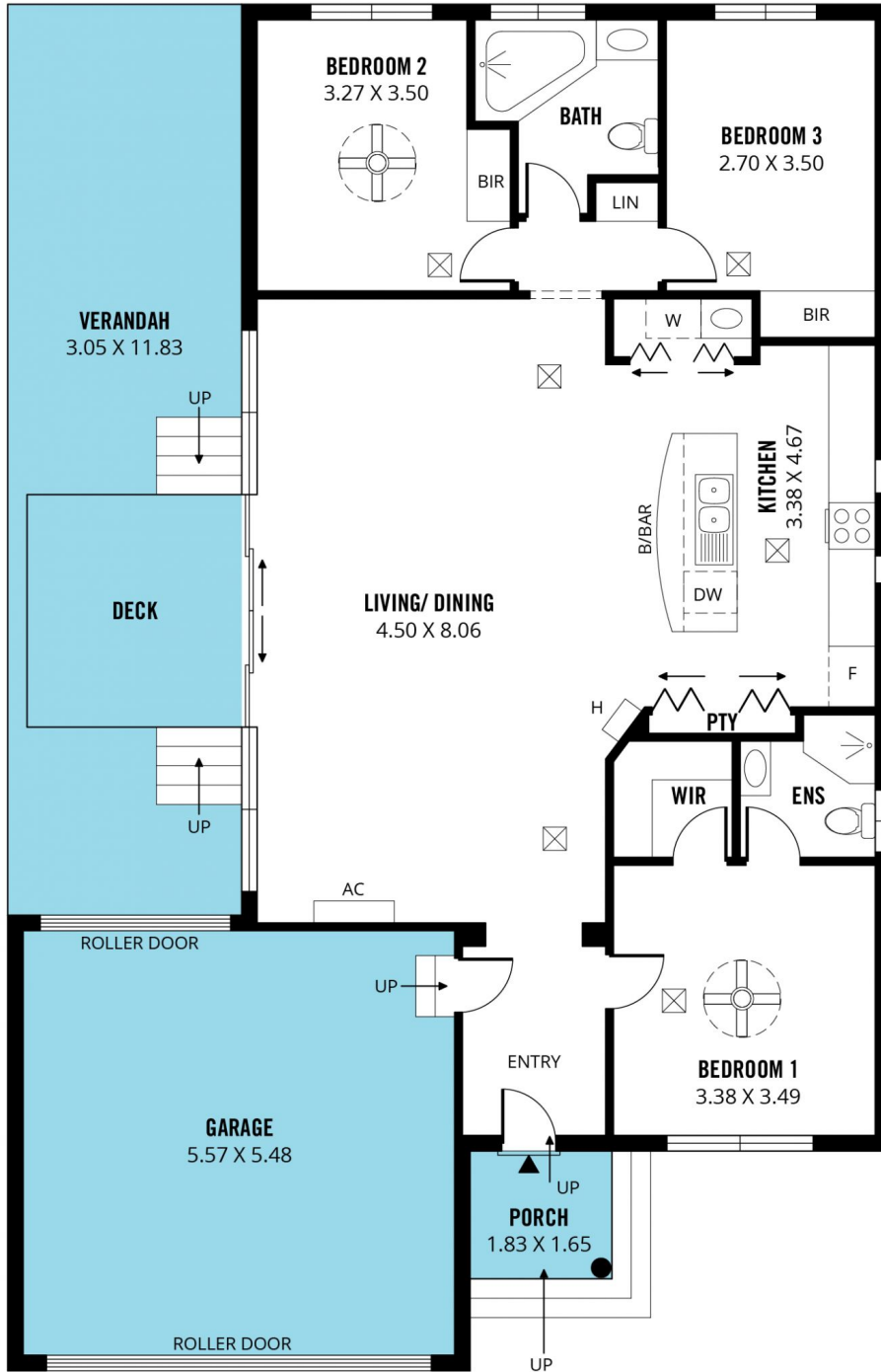
Zoe Ball
08 8381 6000

<https://www.magain.com.au>
Magain Real Estate

Shop 15, Woodcroft Market Plaza, 217 Pimpala Road W
08 8381 6000



(APPROX. LOCATION)



Scale in metres. This drawing is for illustration purposes only. All measurements are approximate and details intended to be relied upon should be independently verified.

Produced by **The Fotobase Group**