

# MAGAIN



## 16 Glenwood Drive Bellevue Heights SA

6 3 2

Set on a large 870sqm block, this huge Architecturally designed family home offers over 300sqm of living space over two levels, giving growing families plenty of space both inside & out. Just some of the wonderful features of this home include the decked balcony with sensational sunset views, solar heated in-ground tiled swimming pool, two huge living areas, three bathrooms and even caravan parking outside. This home has been lovingly cared for and enjoyed for many years by the family and represents a fantastic opportunity for the right buyer, looking to settle in this dress circle location.

Upstairs you will find four of the six bedrooms, the master has an ensuite, built in robes and lovely views out over the valley. To the front of the home, the WOW factor hits you

[For full version visit the website](https://www.magain.com.au/property/16-glenwood-drive-bellevue-heights-sa/8437807)

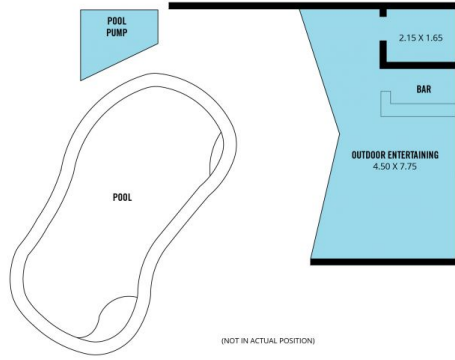
**Type** : House  
**Price** : \$ 1,040,000  
**Building Size** : 323 sqm  
**Land Size** : 870 sqm  
**View** : <https://www.magain.com.au/property/16-glenwood-drive-bellevue-heights-sa/8437807>



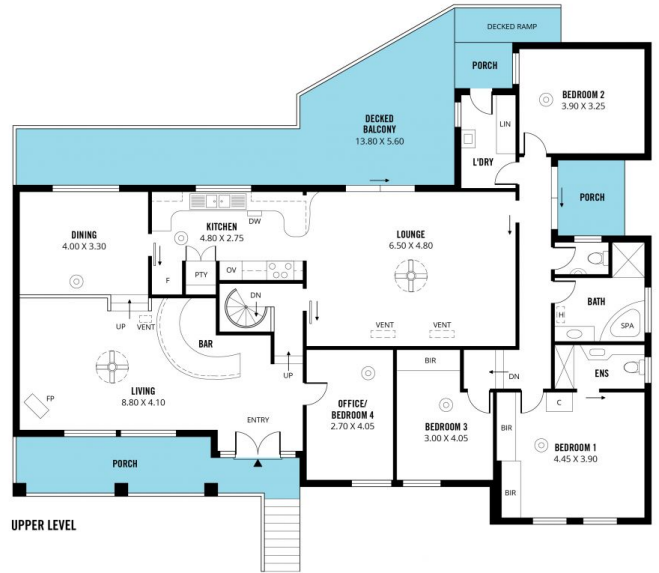
**Zoe Ball**  
08 8381 6000

<https://www.magain.com.au>  
Magain Real Estate

Shop 15, Woodcroft Market Plaza, 217 Pimpala Road W  
08 8381 6000



LOWER LEVEL



UPPER LEVEL

- 505m<sup>2</sup>

**TOTAL**
- 323m<sup>2</sup>

Living
- 41m<sup>2</sup>

Decked  
Balcony
- 36m<sup>2</sup>

Garage
- 69m<sup>2</sup>

Porch
- 36m<sup>2</sup>

Outdoor  
Entertaining



Scale in metres. This drawing is for illustration purposes only. All measurements are approximate and details intended to be relied upon should be independently verified.