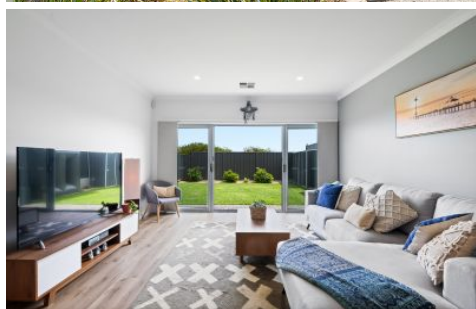


# MAGAIN



## 42 Lovelock Drive Noarlunga Downs SA

3  2  1 

This spectacular low maintenance townhouse is perfect for downsizers, investors and families with a busy lifestyle. The main bedroom with ensuite and walk-in-robe, along with the kitchen/living areas are located downstairs. This means the spaces you use most are available without having to venture upstairs. Upstairs you'll find two more generously sized bedrooms, both with built in robes, a sparkling large main bathroom with full sized bath, plus a study area at the top of the landing. Great for those who work or study from home, or just to create a peaceful reading nook.

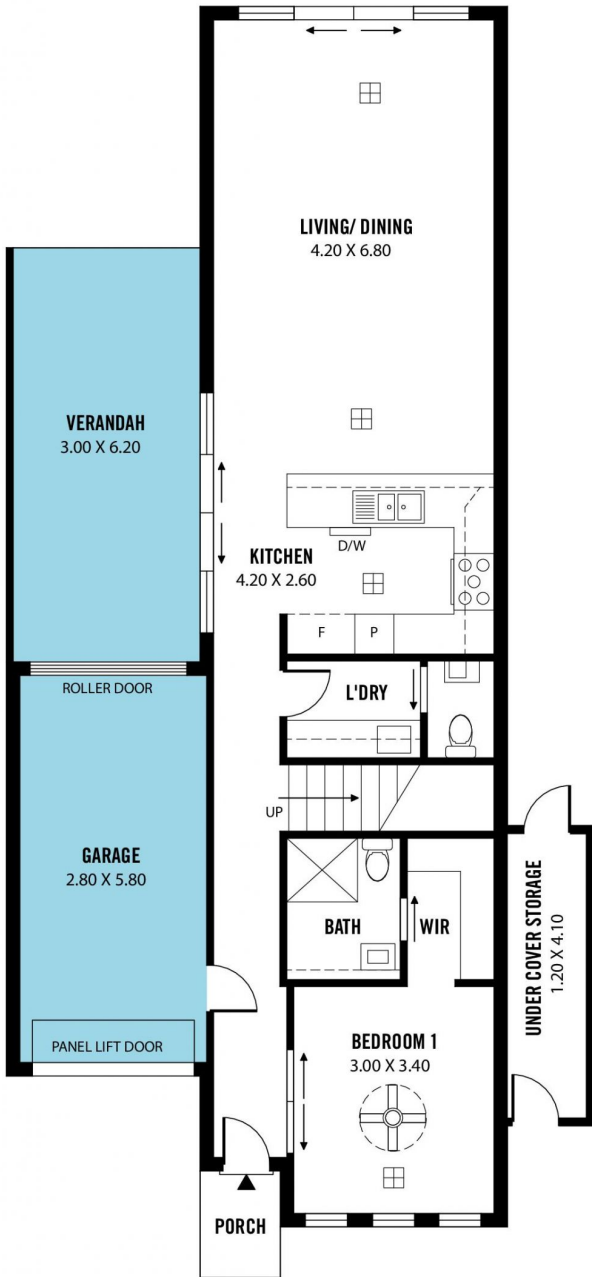
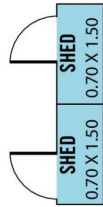
The kitchen is fabulous, modern and family-friendly with a large island bench, dishwasher, plenty of cupboards and room for a French-door fridge. A light neutral colour scheme throughout, downlights and loads of windows give

[For full version visit the website](https://www.magain.com.au/property/42-lovelock-drive-noarlunga-downs-sa/8437831)

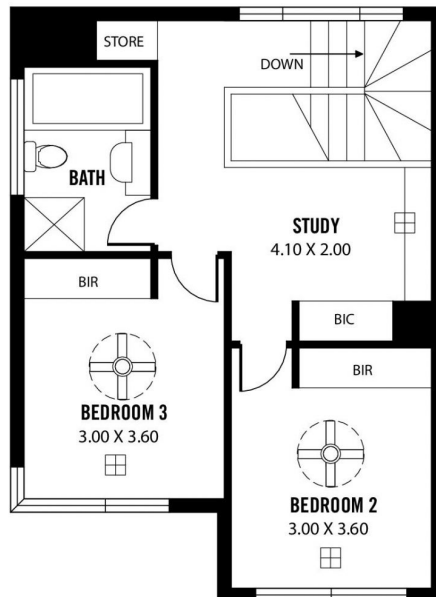
**Type** : House  
**Price** : \$ 565,000  
**Land Size** : 259 sqm  
**View** : <https://www.magain.com.au/property/42-lovelock-drive-noarlunga-downs-sa/8437831>



**Scott McPharlin**  
08 8382 0029



LOWER LEVEL



UPPER LEVEL

