

MAGAIN



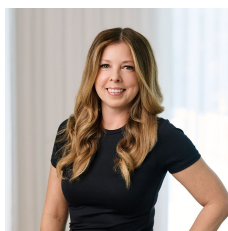
4 Kiribilli Court Seaford Rise SA

4  2  2 

Located just minutes from Moana Beach, nestled in a quiet court in the popular Coast Estate this spacious four bedroom family home is sure to appeal to a myriad of buyers looking for a sea change in this desirable pocket in a quiet court location. With plenty of amenities close by including Seaford Rise Primary School and Tatachilla College just a few minutes' drive, plus shopping and public transport just a short walk away on Commercial Road.

The large 206sqm floor plan offers spacious & functional living, with four good sized bedrooms, main bedroom features an ensuite & walk in robe, while bedrooms 2 & 3 also have built in robes. Down the entry hallway you will find the modern kitchen. Finished with quality fittings and ultra-modern matt black appliances including dishwasher,

Type : House
Price : \$ 695,000
Building Size : 206 sqm
Land Size : 556 sqm
View : <https://www.magain.com.au/property/4-kiribilli-court-seaford-rise-sa/8437846>



Zoe Ball
08 8381 6000

[For full version visit the website](https://www.magain.com.au)

<https://www.magain.com.au>
Magain Real Estate

Shop 15, Woodcroft Market Plaza, 217 Pimpala Road W
08 8381 6000

