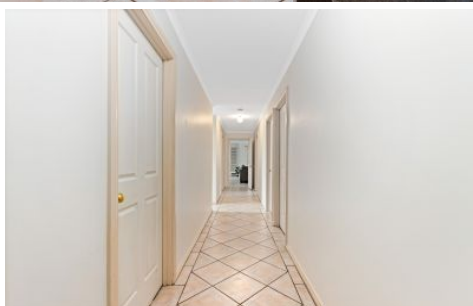


MAGAIN



1 Bloomsbury Court Woodcroft SA

3  1  1 

Please contact Zoe and Mike for all your property advice.

Perfect for young home buyers looking to break into the market, or downsizers looking to move away from a large full size block, this neat three bedroom home offers plenty of space plus a neat, low maintenance courtyard and entertaining area. Located just a minutes' walk to the Woodcroft Plaza shopping Centre, plus close by to Woodcroft Primary, Emmaus Primary and the Woodcroft Child Care Centre.

The spacious & functional floor plan offers three bedrooms, including the master with large walk in robe and built in robes in the second bedroom. Down the hallway is the three-way bathroom with separate vanity, with a large linen

[For full version visit the website](https://www.magain.com.au/property/1-bloomsbury-court-woodcroft-sa/8437867)

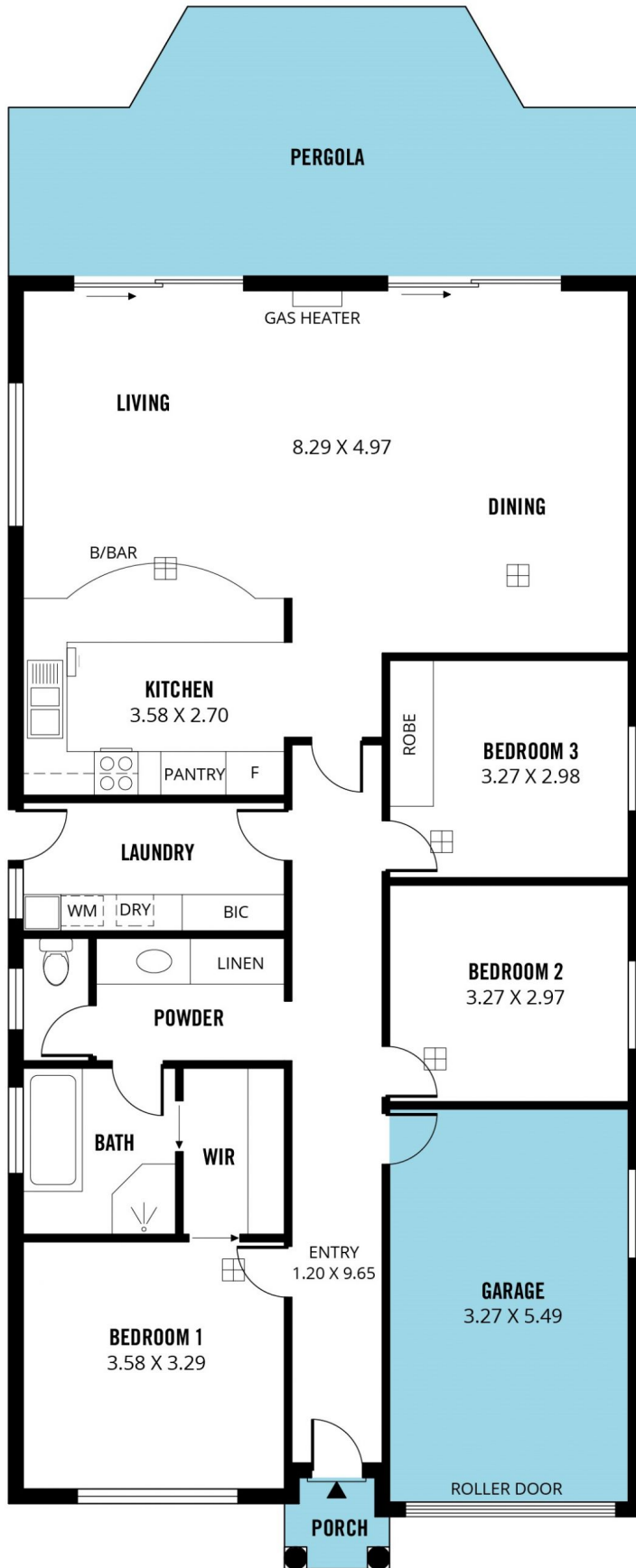
Type : House
Price : \$ 540,000
Building Size : 140 sqm
Land Size : 360 sqm
View : <https://www.magain.com.au/property/1-bloomsbury-court-woodcroft-sa/8437867>



Zoe Ball
08 8381 6000



Levi Sakkas
08 8366 2292



Scale in metres. This drawing is for illustration purposes only. All measurements are approximate and details intended to be relied upon should be independently verified. Produced by **The Fotobase Group**