

# MAGAIN



86 Ashley Street Torrensville SA

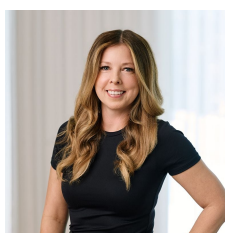
4 🚗 2 🚚 3 🚗

Once known as the Crown Dairy, this stunning 1890 stone Villa has been beautifully updated & extended. Keeping the character from the original home, while adding tasteful modern additions to create a wonderful family home with almost 300sqm of living space. Set on a huge corner block, over 1,045sqm, it features two wonderful outdoor entertaining areas, both overlooking a sparkling in-ground solar heated saltwater pool.

The original part of the home has four generous bedrooms and a formal lounge room, all offering the beautiful character features you'd expect from a home of this era, polished timber floorboards, lofty ceilings with decorative cornices, ceiling roses and decorative fireplaces & mantels, plus modern plantation shutters and built in wardrobes

[For full version visit the website](https://www.magain.com.au/property/86-ashley-street-torrensville-sa/8437872)

**Type** : House  
**Price** : \$ 2,150,000  
**Building Size** : 296 sqm  
**Land Size** : 1045 sqm  
**View** : <https://www.magain.com.au/property/86-ashley-street-torrensville-sa/8437872>



**Zoe Ball**  
08 8381 6000

<https://www.magain.com.au>  
Magain Real Estate

Shop 15, Woodcroft Market Plaza, 217 Pimpala Road W  
08 8381 6000



Scale in metres. This drawing is for illustration purposes only. All measurements are approximate and details intended to be relied upon should be independently verified.

Produced by **The Fotobase Group**