

MAGAIN



17 Radcliffe Grove Christie Downs SA

3 1 2

Please contact Scott for all your property advice.

Step inside this home and be pleasantly surprised by the stunning decor and updated finishes. The living room with raked ceiling, feature brick wall and downlights is truly spectacular. An open plan and bright feel is achieved with a lovely light and neutral decor throughout this entire home.

Updated kitchen, bathroom and laundry areas means all the hard work is done here. Recently painted throughout this home is ready to simply enjoy. The kitchen is perfect for the home chef or family with a 900mm oven, walk-in-pantry and dishwasher. A family friendly bathroom with big tub will make bath time for the kids or grandkids a piece of cake. There's plenty of storage throughout with

[For full version visit the website](https://www.magain.com.au/property/17-radcliffe-grove-christie-downs-sa/84379-12)

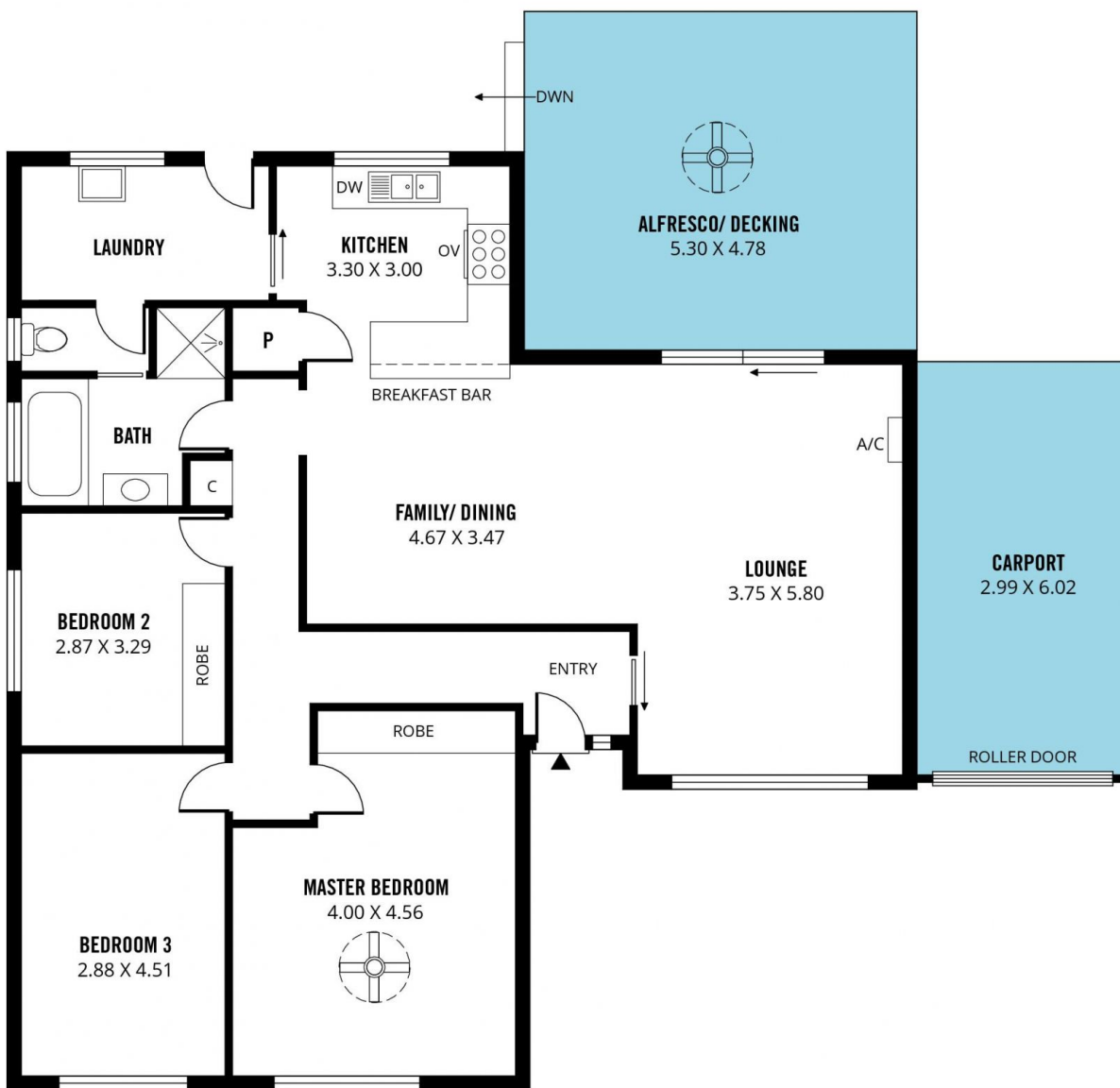
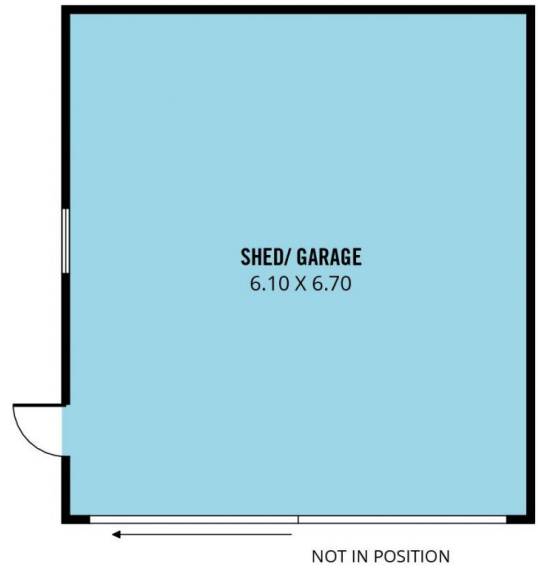
Type : House
Price : \$ 589,000
Building Size : 136 sqm
Land Size : 689 sqm
View : <https://www.magain.com.au/property/17-radcliffe-grove-christie-downs-sa/84379-12>



Scott McPharlin
08 8381 6000

<https://www.magain.com.au>
Magain Real Estate

Shop 15, Woodcroft Market Plaza, 217 Pimpala Road W
08 8381 6000



Scale in metres. This drawing is for illustration purposes only. All measurements are approximate and details intended to be relied upon should be independently verified.

Produced by **The Fotobase Group**