

# MAGAIN



## 12 Oak Crescent Hawthorndene SA

5 🛏 1 🚿 2 🚗

Offers will be closing Tuesday night 18th April. If you would like to put an offer forward please contact Zoe Ball 0415 633 989.

Nestled in the leafy streets of Hawthorndene, this character filled family home sits on a 1,090sqm block and offers a host of features. From its five bedrooms, the lovely family room with wood fire and the undercover entertaining area that offers peace & tranquillity in this fabulous location, this home is sure to please. Located just 450m to the Hawthorndene Primary school, GD's Fruit Wholesalers and the Suffolk Reserve & playground it is a perfect location for families.

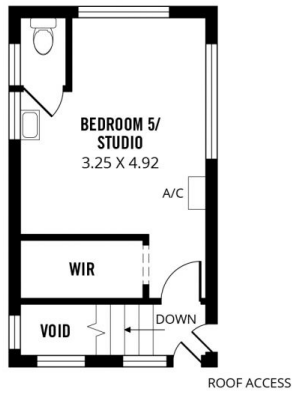
The spacious & split level floor plan offers five bedrooms,

[For full version visit the website](#)

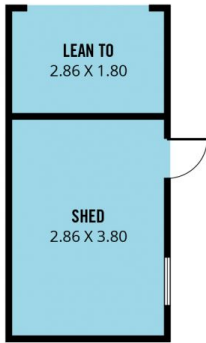
**Type** : House  
**Price** : \$ 772,000  
**Building Size** : 160 sqm  
**Land Size** : 1090 sqm  
**View** : <https://www.magain.com.au/property/12-oak-crescent-hawthorndene-sa/8437926>



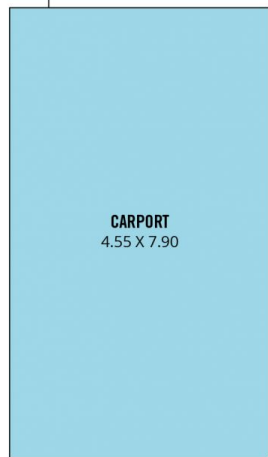
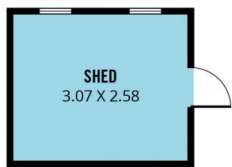
**Zoe Ball**  
08 8381 6000



**FIRST FLOOR**



**GROUND FLOOR**



Scale in metres. This drawing is for illustration purposes only. All measurements are approximate and details intended to be relied upon should be independently verified.