

# MAGAIN



## 10 Steamranger Drive Sheidow Park SA

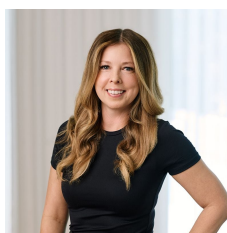
3 1 1

Entertain in style with this fantastic outdoor living area and outdoor kitchen. This modern and stylish home offers plenty of space inside & out while utilising every inch of the low maintenance block. Offering three bedrooms, large open plan living and an impressive entertaining area, this home is sure to delight. Situated in this popular pocket of Sheidow park it is positioned neatly between two reserves including Southbound Reserve with a playground & basketball court, rotunda and BBQ facilities plus the Woodend Primary School is only a 3 minute drive away.

The functional & spacious floor plan offers three bedrooms, including master with walk through robe & ensuite access to the two way bathroom with separate toilet & vanity for convenience, plus a linen cupboard. Bedrooms 2 & 3 also

[For full version visit the website](https://www.magain.com.au/property/10-steamranger-drive-sheidow-park-sa/8437939)

**Type** : House  
**Price** : \$ 619,000  
**Building Size** : 118 sqm  
**Land Size** : 300 sqm  
**View** : <https://www.magain.com.au/property/10-steamranger-drive-sheidow-park-sa/8437939>



**Zoe Ball**  
08 8381 6000

<https://www.magain.com.au>  
Magain Real Estate

Shop 15, Woodcroft Market Plaza, 217 Pimpala Road W  
08 8381 6000

