

MAGAIN



10 Sherry Court Huntfield Heights SA

2 1 1

Please contact Andrew for all your property advice.

Situated on a leafy 622 square metre block in highly sought after Huntfield Heights location. Exceptionally located for a lifestyle of absolute convenience, this single family home is set in the heartland of Huntfield Heights and is the ultimate in day-to-day convenience, close to all amenities the area has to offer. Light filled interiors and private outdoor spaces make this a relaxed family haven. With a fully fenced yard, established gardens and a park nearby, this home could be rented or kept as a private residence.

If you are looking for a great value buy in this market then this house is for you. No extra work to be done to the house - just move straight in. The casual and cozy living area provides the ideal place to come together and enjoy

[For full version visit the website](https://www.magain.com.au/property/10-sherry-court-huntfield-heights-sa/8437944)

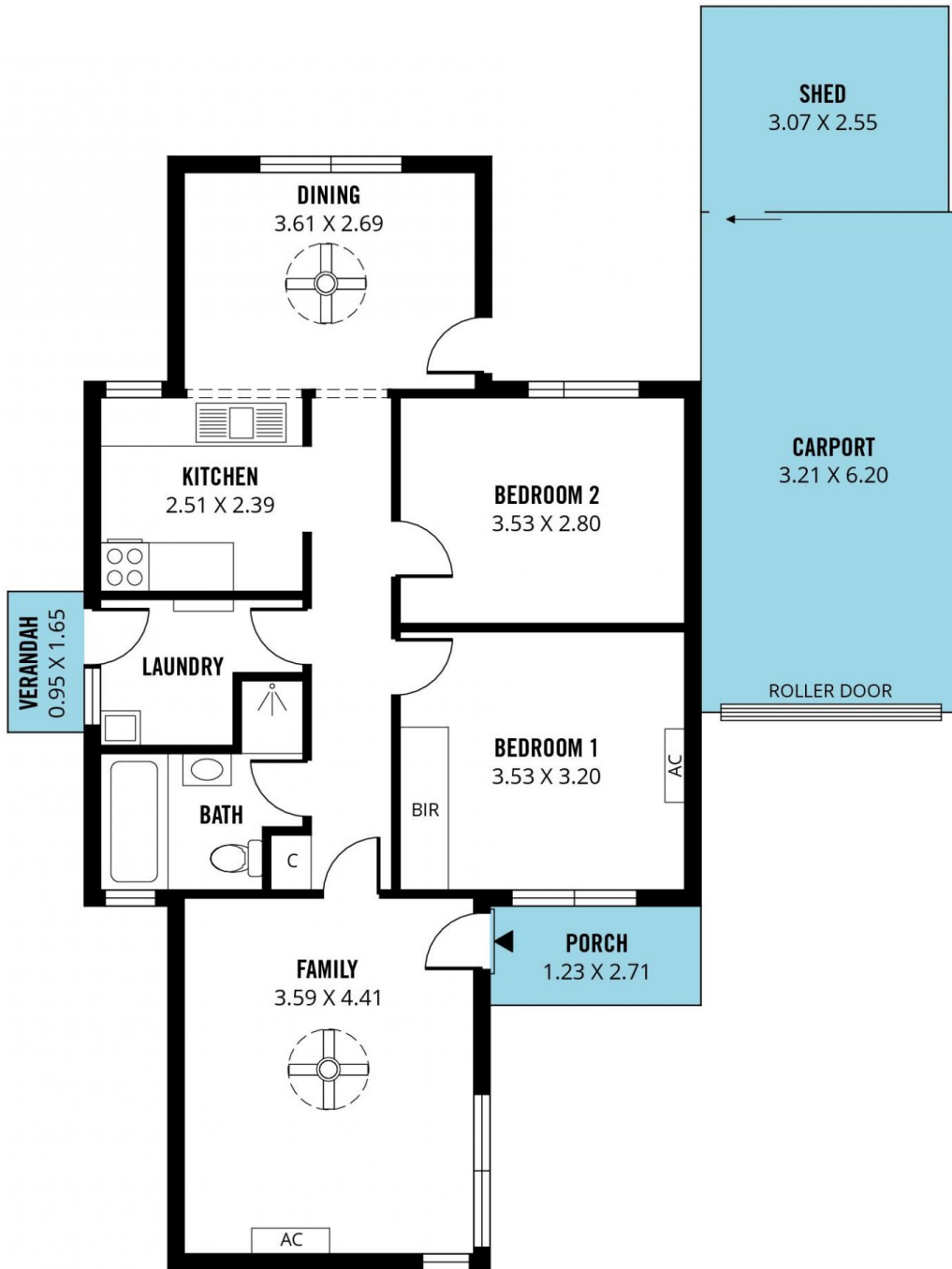
Type : House
Price : \$ 470,000
Land Size : 622 sqm
View : <https://www.magain.com.au/property/10-sherry-court-huntfield-heights-sa/8437944>



Andrew Robey
08 8366 2292



Craig Thomson
08 8366 2292



Scale in metres. This drawing is for illustration purposes only. All measurements are approximate and details intended to be relied upon should be independently verified.

Produced by **The Fotobase Group**