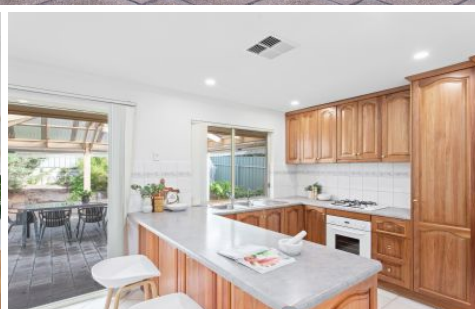


MAGAIN



8 Thalassa Mews Aberfoyle Park SA

3  2  2 

Contact Andrew for all your property advice.

Privately tucked away in a no-through road but yet only minutes away to local shops and amenities at the Hub Shopping Centre. Great schools, walks and parks, Happy Valley Reservoir and McLaren Vale wineries all on your doorstep.

Whether you are downsizing from a larger block, investing in one of the South's best positions or starting out and don't have the time for gardens and lawns on the weekend, this one is worth a look.

This home represents the easy life with little in the way of maintenance both inside and out. Just some of the features

[For full version visit the website](https://www.magain.com.au/property/8-thalassa-mews-aberfoyle-park-sa/8437961)

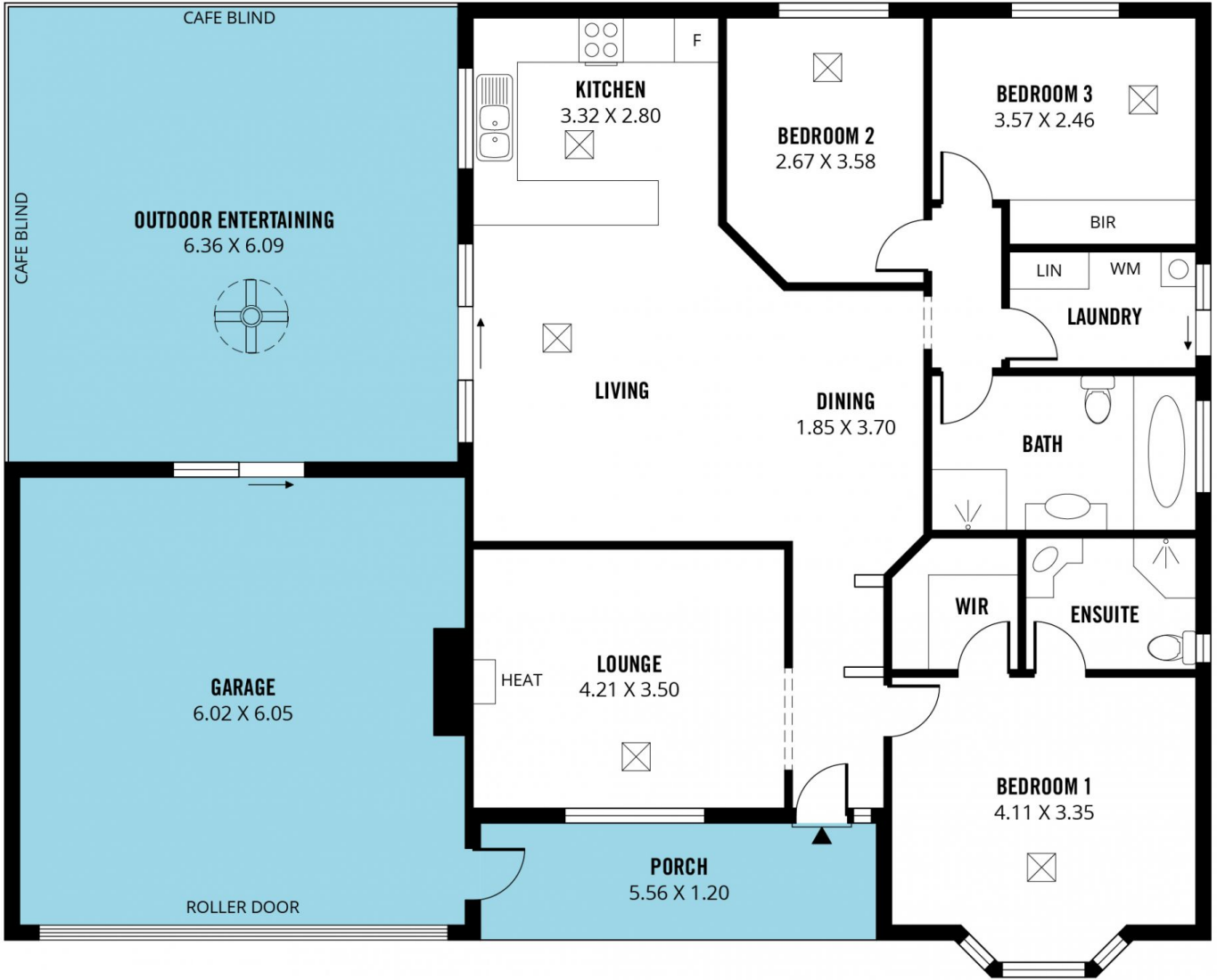
Type : House
Price : \$ 647,589
Building Size : 150 sqm
Land Size : 434 sqm
View : <https://www.magain.com.au/property/8-thalassa-mews-aberfoyle-park-sa/8437961>



Andrew Boswell
08 8381 6000

<https://www.magain.com.au>
Magain Real Estate

Shop 15, Woodcroft Market Plaza, 217 Pimpala Road W
08 8381 6000



Scale in metres. This drawing is for illustration purposes only. All measurements are approximate and details intended to be relied upon should be independently verified.

Produced by **The Fotobase Group**