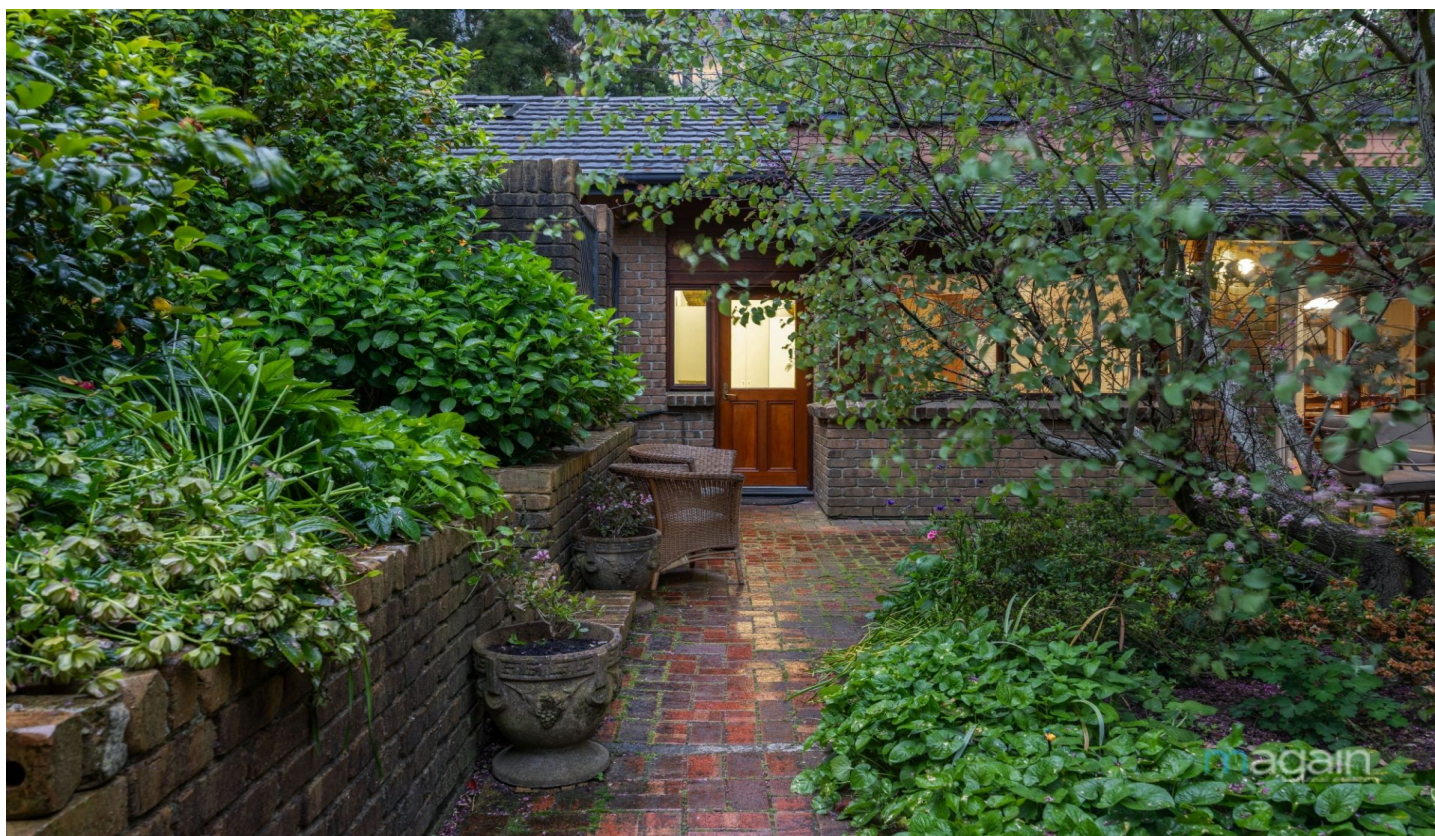


MAGAIN



15 Radbone Road Mount George SA

3 1 2

Please contact Scott McPharlin from Magain Real Estate for all your property advice.

This timeless 1980s architecturally designed masterpiece is surrounded by nature. Set on a sprawling half-acre block, it boasts rambling natural gardens and ample room for kids to run and play. Privacy and tranquility are yours in this lovely quiet spot.

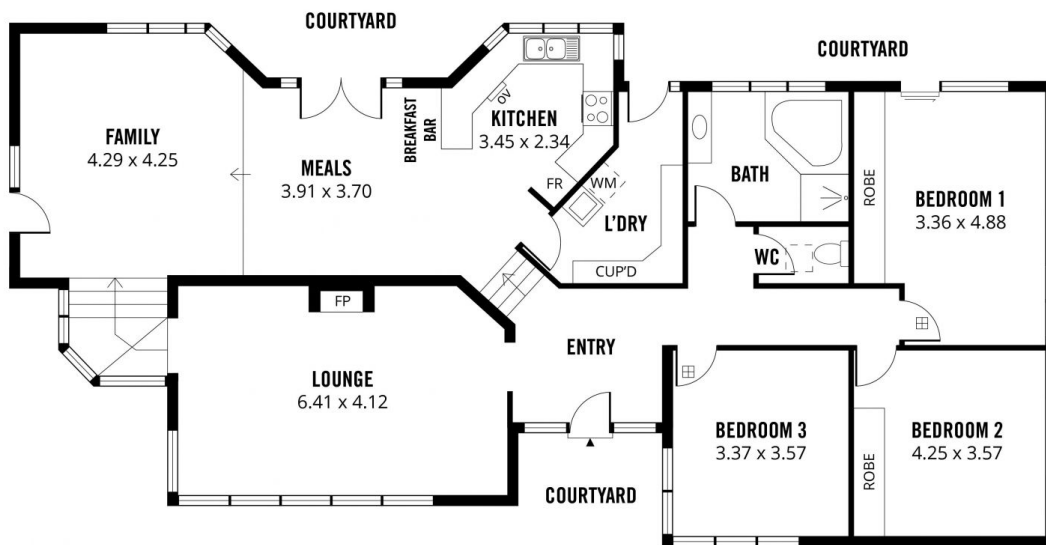
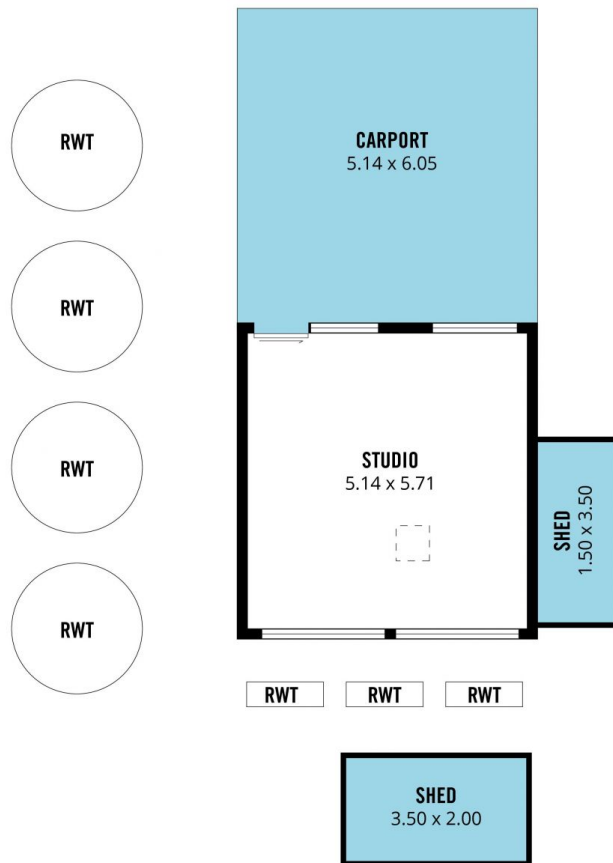
As you enter you'll be greeted by a cosy lounge with combustion heater for winter movie nights. The big windows throughout this home help to bring the beautiful natural surrounding indoors. Generously sized rooms and multiple living areas provide space and comfort for all your needs. The authentic timber kitchen is spacious and an

[For full version visit the website](https://www.magain.com.au/property/15-radbone-road-mount-george-sa/8437972)

Type : House
Price : \$ 1,050,000
Land Size : 1980 sqm
View : <https://www.magain.com.au/property/15-radbone-road-mount-george-sa/8437972>



Scott McPharlin
08 8382 0029



Scale in metres. This drawing is for illustration purposes only. All measurements are approximate and details intended to be relied upon should be independently verified.

Produced by **The Fotobase Group**