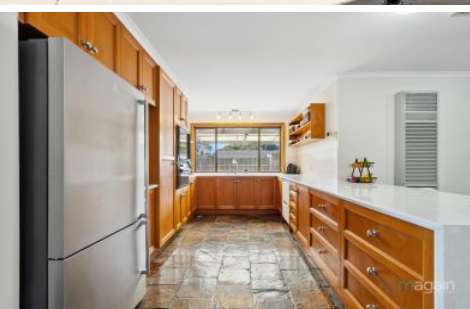


MAGAIN



10 Headland Crescent Woodcroft SA

3 2 3

Please contact Mike Dobbin and Zoe Ball from Magain Real Estate for all your property advice.

This spacious family home, situated on a generous 836 sqm block in the heart of Woodcroft, offers a tranquil and sought-after living experience. Featuring three generously-sized bedrooms, each equipped with ceiling fans, bedrooms 2 & 3 with built-in robes, and the master also boasts a bay window with roller shutters, a built-in robe, and an ensuite bathroom with a separate vanity for added convenience.

The front of the house hosts a formal lounge and dining room, adorned with beautiful polished timber hardwood floors and convenient walk-in storage. The heart of this

[For full version visit the website](#)

Type : House
Price : \$ 757,500
Building Size : 170 sqm
Land Size : 836 sqm
View : <https://www.magain.com.au/property/10-headland-crescent-woodcroft-sa/8437982>



Zoe Ball
08 8381 6000

<https://www.magain.com.au>
Magain Real Estate

Shop 15, Woodcroft Market Plaza, 217 Pimpala Road W
08 8381 6000



Scale in metres. This drawing is for illustration purposes only. All measurements are approximate and details intended to be relied upon should be independently verified.

Produced by **The Fotobase Group**