




# MAGAIN



23/2 Grey Box Avenue Noarlunga Centre SA

2  1  1 

Please contact Scott for all your property advice.

A great entry level property or investment, this apartment ticks all the boxes at an affordable price. The building is secure, and the apartment itself is light, modern and practical.

High ceilings and a large open plan tiled living/dining area has been combined with two bedrooms, both with robes, spacious bathroom/laundry, and a modern kitchen with attractive pale green tiled splashback.

The balcony is of good size, making a great spot to relax with a coffee or to grow your very own herbs. There's a single car space for your car in the secure rear carpark.

[For full version visit the website](https://www.magain.com.au/property/232-grey-box-avenue-noarlunga-centre-sa/8437983)

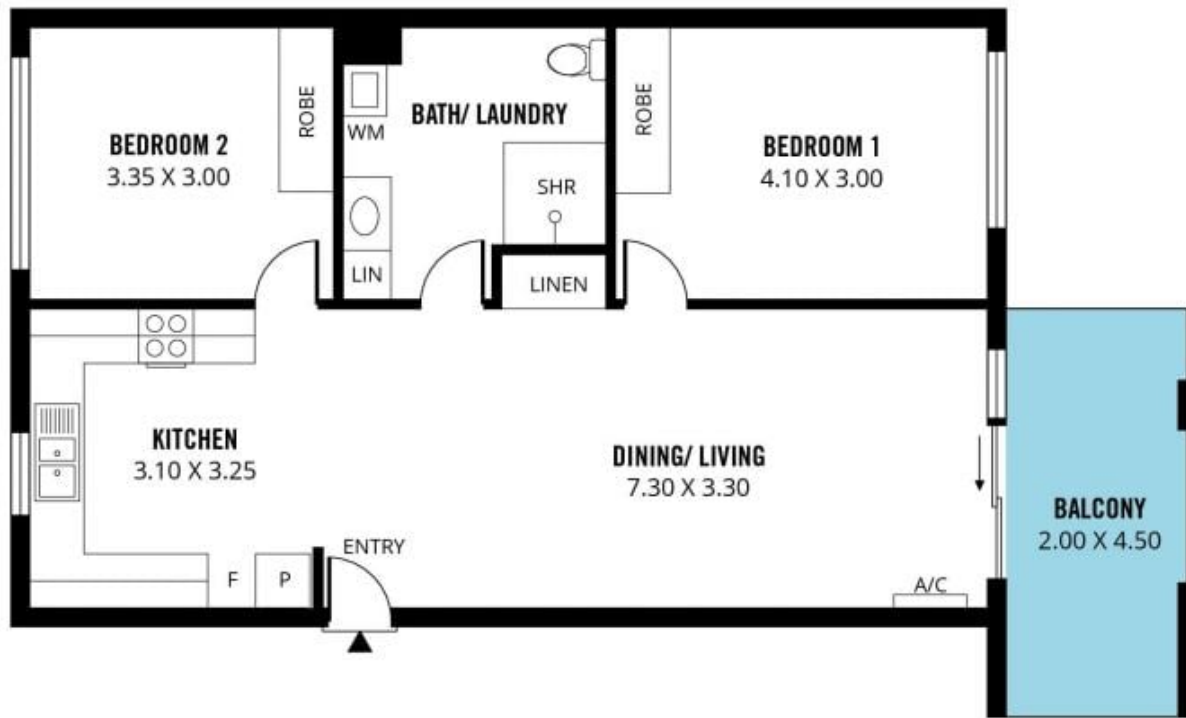
**Type** : Apartment

**Price** : \$ 348,888

**View** : <https://www.magain.com.au/property/232-grey-box-avenue-noarlunga-centre-sa/8437983>



**Scott McPharlin**  
08 8382 0029



---

Scale in metres. This drawing is for illustration purposes only. All measurements are approximate and details intended to be relied upon should be independently verified. Produced by **The Fotobase Group**