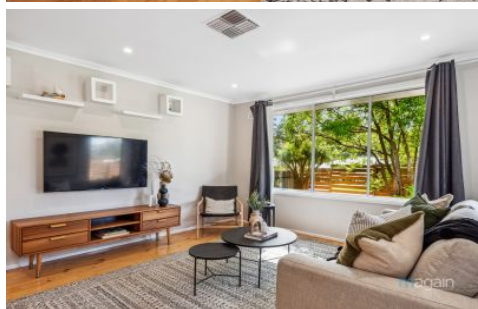


MAGAIN



23 John Street Morphett Vale SA

3 1 4

Please contact Scott for all your property advice.

Welcome to a fantastic opportunity to own a solid 3-bedroom home situated on an expansive 811sqm corner block in the heart of Morphett Vale. This property not only offers ample space for your family but also provides an unbeatable location with schools, parks, and shopping options just moments away.

Step inside to discover a well-maintained home with three comfortable bedrooms, perfect for your family's needs. The spacious backyard provides endless possibilities for outdoor activities, gardening, and creating your own oasis.

The home has been upgraded over the years with a

[For full version visit the website](https://www.magain.com.au/property/23-john-street-morphett-vale-sa/8437993)

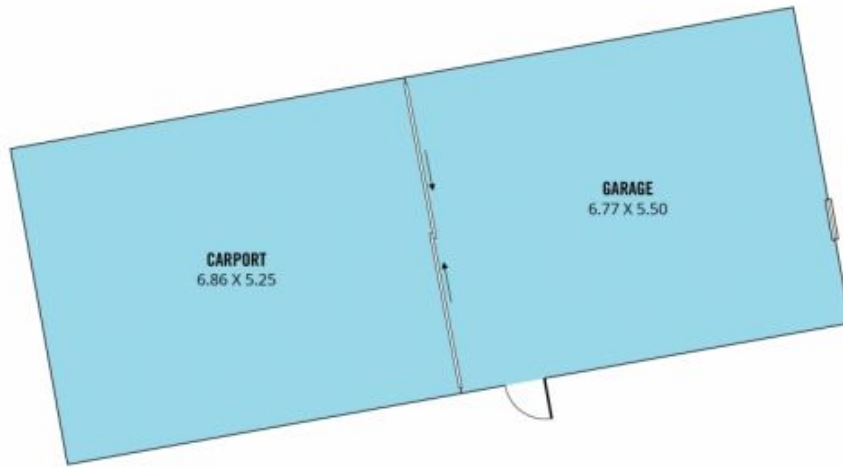
Type : House
Price : \$ 625,000
Building Size : 127 sqm
Land Size : 811 sqm
View : <https://www.magain.com.au/property/23-john-street-morphett-vale-sa/8437993>



Scott McPharlin
08 8382 0029

<https://www.magain.com.au>
Magain Real Estate

Shop 15, Woodcroft Market Plaza, 217 Pimpala Road W
08 8381 6000



Scale in metres. This drawing is for illustration purposes only. All measurements are approximate and details intended to be relied upon should be independently verified.

Produced by **The Fotobase Group**