

MAGAIN



2 Mander Road Christie Downs SA

3 1 3

Please contact Scott for all your property advice.

This fully renovated home is set on a spacious corner block with dual access. There's ample off-street parking, including secure parking for your caravan or boat. The fully fenced front yard ensures privacy and security.

Step inside and you'll be greeted by a modern country-style kitchen with timber benches overlooking a big open plan living and dining space. Perfect for allergy sufferers or those with mobility issues, this home also boasts easy-to-maintain timber floors throughout. This property maintains a modern country feel throughout, with an updated bathroom and robes in all three bedrooms for great storage. Stay cool comfortable year-round with split

[For full version visit the website](https://www.magain.com.au/property/2-mander-road-christie-downs-sa/8438013)

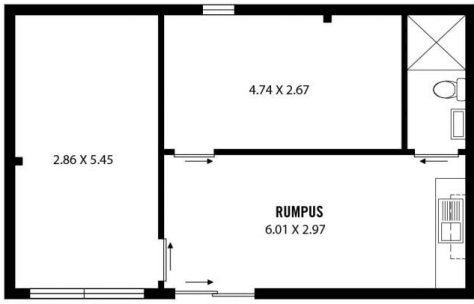
Type : House
Price : \$ 620,000
Building Size : 97 sqm
Land Size : 761 sqm
View : <https://www.magain.com.au/property/2-mander-road-christie-downs-sa/8438013>



Scott McPharlin
08 8382 0029

<https://www.magain.com.au>
Magain Real Estate

Shop 15, Woodcroft Market Plaza, 217 Pimpala Road W
08 8381 6000



(NOT IN ACTUAL LOCATION)



Scale in metres. This drawing is for illustration purposes only. All measurements are approximate and details intended to be relied upon should be independently verified.

Produced by The Fotobase Group