

MAGAIN



16 Drysdale Drive Trott Park SA

3 1 1

Please contact Scott McPharlin from Magain Real Estate for all your property advice.

Set on a corner block of around 650m2, this home represents great value. The updated kitchen has lots of cupboards and a breakfast bar that will be ideal for those that like to meal prep or bake. It overlooks a light-filled meals/family room. Step outside to find a lovely big outdoor pergola area.

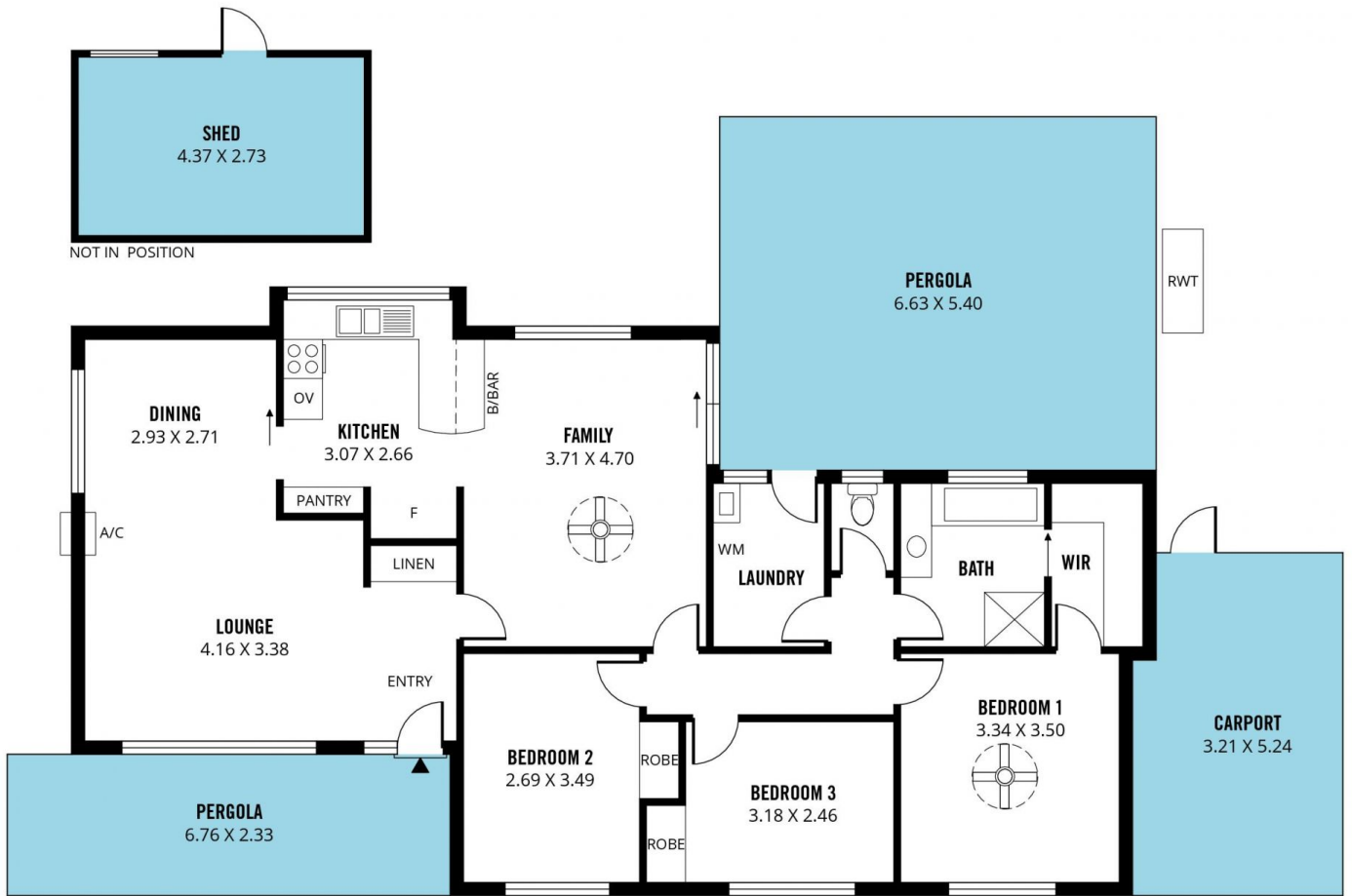
There's a lovely view of the hills from the bedrooms and lounge area where you can watch the lights sparkle at night. The home is also close to the Glenithorne National Park, Happy Valley Reservoir and Hallett Cove Shopping Centre.

[For full version visit the website](https://www.magain.com.au/property/16-drysdale-drive-trott-park-sa/8438051)

Type : House
Price : \$ 670,000
Land Size : 650 sqm
View : <https://www.magain.com.au/property/16-drysdale-drive-trott-park-sa/8438051>



Scott McPharlin
08 8382 0029



Scale in metres. This drawing is for illustration purposes only. All measurements are approximate and details intended to be relied upon should be independently verified.

Produced by **The Fotobase Group**