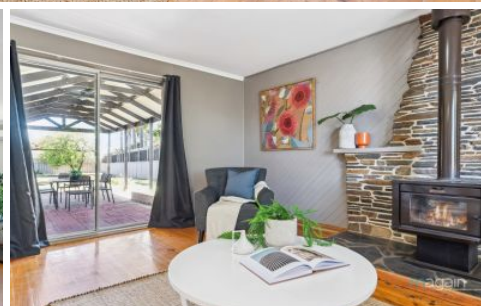


# MAGAIN



27 Chynoweth Avenue Hackham SA

3  2  1 

Please contact Scott McPharlin from Magain Real Estate for all your property advice.

Set on a big block of around 866m<sup>2</sup>, this family home boasts two living areas, three good sized bedrooms, two bathrooms and a big traditional grassy back yard with drive through access to a double garage. Step inside to find a lovely bright neutral colour scheme, timber floors with updated kitchen and bathroom areas.

There's loads of space for families as well as plenty of storage. There's ample cupboards and bench space in the big family kitchen, as well as two linen presses in the hall, a walk-in-robe to the Master bedroom and big built-in-ropes to bedroom 3. Good heating and cooling options in the form

[For full version visit the website](https://www.magain.com.au/property/27-chynoweth-avenue-hackham-sa/8438071)

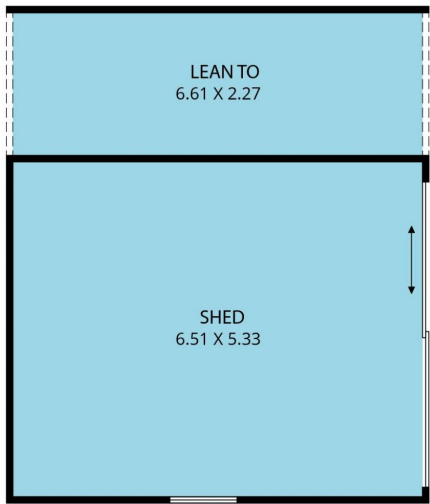
**Type** : House  
**Price** : \$ 620,000  
**Building Size** : 145 sqm  
**Land Size** : 866 sqm  
**View** : <https://www.magain.com.au/property/27-chynoweth-avenue-hackham-sa/8438071>



**Scott McPharlin**  
08 8382 6000

<https://www.magain.com.au>  
Magain Real Estate

Shop 15, Woodcroft Market Plaza, 217 Pimpala Road W  
08 8381 6000



APPROX. LOCATION

NOT IN POSITION

