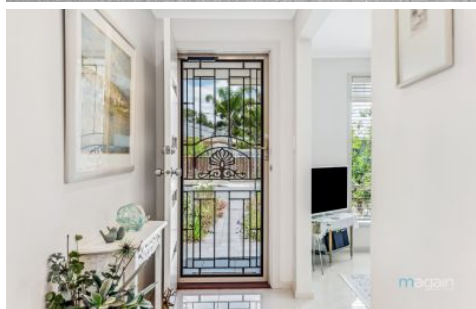


MAGAIN



21 Lancaster Circuit Old Noarlunga SA

3 2 2

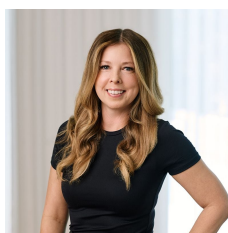
Please contact Mike Dobbin and Zoe Ball from Magain Real Estate for all your property advice.

Nestled within the sought-after Bosworth Estate, this abode offers the unique advantage of being part of The Shoe locale. Embrace the charm of this delightful Township and prepare to be captivated by the elegance of this stylish Fairmont Home from start to finish.

The home boasts a grand gallery-style entrance, seamlessly flowing into an open-plan kitchen, a stunning family room, a separate living area, and three generously proportioned bedrooms. Its design blends practicality with sophistication, ensuring an atmosphere of comfort and grace. The property's attractive, low-maintenance gardens

[For full version visit the website](https://www.magain.com.au/property/21-lancaster-circuit-old-noarlunga-sa/8438095)

Type : House
Price : \$ 660,000
Building Size : 161 sqm
Land Size : 362 sqm
View : <https://www.magain.com.au/property/21-lancaster-circuit-old-noarlunga-sa/8438095>



Zoe Ball
08 8381 6000



Sam Raven
08 8381 6000

<https://www.magain.com.au>
Magain Real Estate

Shop 15, Woodcroft Market Plaza, 217 Pimpala Road W
08 8381 6000



Scale in metres. This drawing is for illustration purposes only. All measurements are approximate and details intended to be relied upon should be independently verified.

Produced by **The Fotobase Group**