

# MAGAIN



## 10 Hibiscus Court Morphett Vale SA

3  1  1 

Please contact Scott McPharlin from Magain Real Estate for all your property advice.

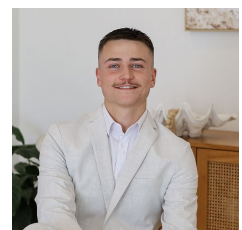
You'll love this neat and tidy family home, with updated kitchen and wet areas. The back yard is fantastic, with a brilliant undercover entertaining space, a healthy lawn, and plenty of space for kids and pets. A fabulous addition to any investor's portfolio, or perhaps this is your very first step into home ownership.

An attractive neutral palette throughout, is combined with practical timber laminate flooring in the living and high traffic areas. The neat, modern kitchen with sleek finishes, offers plenty of cupboards, stainless appliances, and a decent corner pantry. Great for families. The floorplan is

**Type** : House  
**Price** : \$ 734,000  
**Land Size** : 640 sqm  
**View** : <https://www.magain.com.au/property/10-hibiscus-court-morphett-vale-sa/8438137>



**Scott McPharlin**  
08 8382 0029



**Patrick Chay**  
08 8382 0029

[For full version visit the website](https://www.magain.com.au)

<https://www.magain.com.au>  
Magain Real Estate

Shop 15, Woodcroft Market Plaza, 217 Pimpala Road W  
08 8381 6000

